

infiniium DCA-J
Agilent 86100C
Wide-Bandwidth Oscilloscope
Quick Start Guide



Agilent Technologies

Notices

© Agilent Technologies, Inc. 2000-2005

No part of this manual may be reproduced in any form or by any means (including electronic storage and retrieval or translation into a foreign language) without prior agreement and written consent from Agilent Technologies, Inc. as governed by United States and international copyright laws.

Manual Part Number

86100-90078

Edition

June 2005

Printed in Malaysia

Agilent Technologies, Inc.
Digital Signal Analysis Division
1400 Fountaingrove Parkway
Santa Rosa, CA 95403, USA

Warranty

The material contained in this document is provided “as is,” and is subject to being changed, without notice, in future editions. Further, to the maximum extent permitted by applicable law, Agilent disclaims all warranties, either express or implied, with regard to this manual and any information contained herein, including but not limited to the implied warranties of merchantability and fitness for a particular purpose. Agilent shall not be liable for errors or for incidental or consequential damages in connection with the furnishing, use, or performance of this document or of any information contained herein. Should Agilent and the user have a separate written agreement with warranty terms covering the material in this document that conflict with these terms, the warranty terms in the separate agreement shall control.

Technology Licenses

The hardware and/or software described in this document are furnished under a license and may be used or copied only in accordance with the terms of such license.

LZW compression/decompression:
Licensed under U.S. Patent No. 4,558,302 and foreign counterparts. The purchase or use of LZW graphics capability in a licensed product does not authorize or permit an end user to use any other product or perform any other method or activity involving use of LZW unless the end user is separately licensed in writing by Unisys.

Restricted Rights Legend

If software is for use in the performance of a U.S. Government prime contract or subcontract, Software is delivered and licensed as “Commercial computer software” as defined in DFAR 252.227-7014 (June 1995), or as a “commercial item” as defined in FAR 2.101(a) or as “Restricted computer software” as defined in FAR 52.227-19 (June 1987) or any equivalent agency regulation or contract clause. Use, duplication or disclosure of Software is subject to Agilent Technologies’ standard commercial license terms, and non-DOD Departments and Agencies of the U.S. Government will receive no greater than Restricted Rights as defined in FAR 52.227-19(c)(1-2) (June 1987). U.S. Government users will receive no greater than Limited Rights as defined in FAR 52.227-14 (June 1987) or DFAR 252.227-7015 (b)(2) (November 1995), as applicable in any technical data.

Safety Notices

CAUTION

Caution denotes a hazard. It calls attention to a procedure which, if not correctly performed or adhered to, could result in damage to or destruction of the product. Do not proceed beyond a caution sign until the indicated conditions are fully understood and met.

WARNING

Warning denotes a hazard. It calls attention to a procedure which, if not correctly performed or adhered to, could result in injury or loss of life. Do not proceed beyond a warning sign until the indicated conditions are fully understood and met.

Trademark Acknowledgements

Microsoft is a U.S. registered trademark of Microsoft Corporation.

Windows and MS Windows are U.S. registered trademarks of Microsoft Corporation.

MATLAB ® is a U.S. registered trademark of The Math Works, Inc.

Contents

1 Installing the 86100C

Installing the 86100C 1-2

Connector Care 1-38

Returning the Instrument for Service 1-43

2 Using the 86100C

A Quick Tour 2-2

Eye/Mask Mode 2-8

Jitter Mode 2-11

Oscilloscope Mode 2-13

TDR/TDT Mode 2-14

Quick Measure 2-15

Optional Features and Licenses 2-16

Windows XP Professional 2-18

If the Infiniium DCA has a Problem 2-21

3 Using the Built-In Information System

Using the Built-In Information System 3-2

Getting Help While Changing Instrument Settings 3-4

Learning About Measurement Results 3-5

Printing Topics 3-6

4 Working in Comfort

Working in Comfort 4-2

Contents

Installing the 86100C	1-2
Step 1. Inspect the shipment	1-5
Step 2. Position the Infiniium DCA	1-7
Step 3. Install the modules	1-9
Step 4. Connect the keyboard and mouse	1-10
Step 5. Connect a printer (Optional)	1-11
Step 6. Connect the power	1-12
Step 7. Windows Setup Wizard	1-15
Step 8. Change removable hard disk (Option 86100C-090)	1-19
Step 9. Install a feature license (Optional)	1-20
Step 10. Calibrate the touch screen	1-23
Step 11. Avoid costly repairs	1-25
Step 12. Calibrate the modules	1-26
To configure a LAN connection	1-29
To use the removable hard disk option	1-31
To connect an external display	1-36
To clean the 86100C	1-37
Connector Care	1-38
Returning the Instrument for Service	1-43

Installing the 86100C

Installing the 86100C

This chapter shows you how to properly set up your 86100C. Follow the steps in the order presented. In addition, you will learn about care and use of electrical and optical connections.

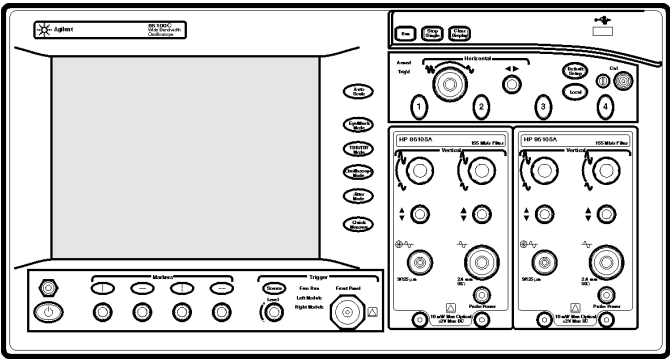


Figure 1-1. 86100C Front Panel

General Safety Considerations

This product has been designed and tested in accordance with the standards listed in the Manufacturer's Declaration of Conformity, and has been supplied in a safe condition. The documentation contains information and warnings which must be followed by the user to ensure safe operation and to maintain the product in a safe condition.

NOTE

Install the instrument according to the enclosure protection provided. This instrument does not protect against the ingress of water. This instrument protects against finger access to hazardous parts within the enclosure.

WARNING

If this product is not used as specified, the protection provided by the equipment could be impaired. This product must be used in a normal condition (in which all means for protection are intact) only.

WARNING

No operator serviceable parts inside. Refer servicing to qualified service personnel. To prevent electrical shock do not remove covers.

WARNING

This is a Safety Class 1 Product (provided with a protective earthing ground incorporated in the power cord). The mains plug shall only be inserted in a socket outlet provided with a protective earth contact. Any interruption of the protective conductor inside or outside of the product is likely to make the product dangerous. Intentional interruption is prohibited.

CAUTION

VENTILATION REQUIREMENTS: When installing the product in a cabinet, the convection into and out of the product must not be restricted. The ambient temperature (outside the cabinet) must be less than the maximum operating temperature of the product by 4° C for every 100 watts dissipated in the cabinet. If the total power dissipated in the cabinet is greater than 800 watts, then forced convection must be used.

CAUTION

This product is designed for use in INSTALLATION CATEGORY II and POLLUTION DEGREE 2 per IEC 1010 and 664 respectively.

Installation Category: Installation Categories (overvoltage categories) are determined by the transient overvoltage levels that may be expected. CAT I: Mains isolated. CAT II: Line voltage in appliance and to wall outlet. CAT III: Line voltage behind wall outlet to next level of distribution.

Instrument Markings

The instruction manual symbol. The product is marked with this warning symbol when it is necessary for the user to refer to the instructions in the manual.



The laser radiation symbol. This warning symbol is marked on products which have a laser output.



The ON, ON, STANDBY, OFF, OFF and AC symbols. The ON, OFF, and STANDBY mark the position of the instrument power line switch. The AC symbol is used to indicate the required nature of the line module input power.



The CE mark is a registered trademark of the European Community.



The CSA mark is a registered trademark of the Canadian Standards Association.



The C-Tick mark is a registered trademark of the Australian Spectrum Management Agency.

ISM1-A

This text denotes the instrument is an Industrial Scientific and Medical Group 1 Class A product.

ICES / NMB-001

This is a marking to indicate product compliance with the Canadian Interference-Causing Equipment Standard.

Step 1. Inspect the shipment

- ❑ Inspect the shipping container and instrument for damage.

Keep the shipping container and cushioning material until you have inspected the contents of the shipment for completeness and have checked the instrument mechanically and electrically.

- ❑ Locate the shipping list. Verify that you received all the accessories on this list, and all the options that you ordered. The following list shows some of the items that may be on the shipping list. The information on your actual shipping list is more accurate and should supersede the information in this list.

Package Contents

- Infiniium DCA
- Keyboard, USB (p/n 0960-2427)
- Mouse, USB (p/n 1150-7799)
- Flash drive, USB (p/n 1818-8989)
- External CD-RW drive, USB (p/n 0950-4658)
- Two power cords
- APC 3.5 (f-f) adapter/connector saver (p/n 5061-5311)
- Quick Start Guide (this book)
- Programmer's Guide

Optional Accessories

- Filler panel 86101-60005
- 11667B Power splitter, dc to 26.5 GHz, APC 3.5 mm
- 11667C Power splitter, dc to 50 GHz, 2.4 mm
- 11898A Plug-in module remote/extender
- 11982A High-speed lightwave receiver
- 54006A 6 GHz Resistive divider probe kit
- 54008B 24 ns delay line
- 54701A 2.5 GHz active probe
- 83440B/C/D Optical-to-Electrical Converters (6/20/34 GHz)
- 83480A-K16 Switch matrix
- 83480A-K17 RIMM fixture
- N1020A 6 GHz TDR probe kit (passive)
- N1022A Active Probe Adapter

Optional Adapters for Electrical Channel Inputs

- SMA (f-f) adapter, Agilent part number 1250-1158
- APC 3.5 (f-f) adapter, Agilent part number 5061-5311

Installing the 86100C






Step 1. Inspect the shipment

Optional Adapters for Optical Channel Inputs

Table 1-1 shows the available fiber-optic adapters for optical channels. These adapters connect onto the front-panel optical channel connectors. FC/PC adapters come preinstalled on new optical modules.

Changing fiber-optic adapters is easy. Simply hand turn an adapter counter-clockwise to remove it from a channel connector; to install a different adapter, hand turn the new adapter clockwise onto the connector.

Table 1-1. Fiber-Optic Adapters for Optical Channels

Front Panel Fiber-Optic Adapters	Description	Agilent Part Number
	Diamond HMS-10	81000AI
	FC/PC	81000FI
	SC	81000KI
	DIN	81000SI
	ST	81000VI

Instrument Options

- 86100C-001, Enhanced 12.5 GHz Trigger Bandwidth, providing pattern lock and eyeline capabilities.
- 86100C-090, Removable hard disk
- 86100C-200, Enhanced Jitter Analysis Software
- 86100C-201, Advanced Waveform Analysis Software
- 86100C-AFP, Additional filler panel
- 86100C-AX4, Rack mount flange kit
- 86100C-AXE, Rack mount flange kit with handles
- 86100C-UK6, Commercial calibration certificate with test data

If anything is missing or defective, [refer to “Contacting Agilent Technologies” on page 1-43](#). If the shipment was damaged, contact the carrier, then contact the nearest Agilent Sales Office. Keep the shipping materials for the carrier’s inspection. The Agilent Sales Office will arrange for repair or replacement at Agilent’s option without waiting for claim settlement.

Step 2. Position the Infiniium DCA

- Position the Infiniium DCA so that it is not difficult to unplug the power cord.
- Position the Infiniium DCA where it will have sufficient clearance for airflow around the top, back, and sides.
- Review the following specifications to ensure that your operating or storage environment is suitable for the instrument.

NOTE

Install the instrument so that the detachable power cord is readily identifiable and is easily reached by the operator. The detachable power cord is the instrument disconnecting device. It disconnects the mains circuits from the mains supply before other parts of the instrument. The front panel switch is only a standby switch and is not a LINE switch. Alternatively, an externally installed switch or circuit breaker (which is readily identifiable and is easily reached by the operator) may be used as a disconnecting device.

CAUTION

If the Infiniium DCA is mounted in a rack or cabinet, do not use the system's power switch to disconnect power from the Infiniium DCA. Instead, use the Infiniium DCA's front-panel power switch. Using the system power switch may corrupt the Windows XP registry requiring you to perform a recovery process to restore normal operation to the Infiniium DCA.

Table 1-2. Environmental Specifications (1 of 2)

Use	indoor
Temperature	
Operating	10 °C to +40 °C (50 °F to + 104 °F)
Non-operating	–40 °C to +65 °C (–40 °F to +158 °F)
Humidity	
Operating	Up to 90% humidity (non-condensing) at +40 °C (+104 °F)
Non-operating	Up to 95% relative humidity at + 65 °C (+149 °F)
Altitude	
Operating	Up to 3,050 meters (10,000 ft)
Non-operating	Up to 12,200 meters (40,000 ft)
Vibration	
Operating	Random vibration 5-500 Hz, 10 minutes per axis, 0.21 g(rms)

Installing the 86100C

Step 2. Position the Infiniium DCA

Table 1-2. Environmental Specifications (2 of 2)

Non-operating	Random vibration 5-500 Hz, 10 minutes per axis, 2.1 g(rms); Resonant search, 5-500Hz swept sine, 1 octave/minute sweep rate, 0.5 g, 10 minute resonant dwell at 4 resonances per axis.
Power requirements	
Voltage	90 to 132 or 198 to 264 Vac, 48-66 Hz CAT II
Power (including modules)	604 VA; 391 W
Weight	
Mainframe	15.5 kg (34 lb)
Modules	1.2 kg (2.6 lb)
Dimensions	
Height	221.5 mm (8.72 in) 241.8 (9.52 in) with bottom feet
Width	425.6 mm (16.75 in) 447.7 (17.63 in) with handles
Depth	562.7 (22.2 in) 619.5 mm (24.4 in) front panel Trigger connector to rear foot

Step 3. Install the modules

Up to two modules can be inserted into the Infiniium DCA. All documentation (including specifications) for plug-in modules is located in the 86100C's Help system. To access the Help system, complete the installation steps, turn on the 86100C, and click **Contents** on the **Help** menu.

- 1 Slide the module into an available front-panel slot.

You can remove or install a module while the instrument is operating.

- 2 Finger tighten the two knurled locking screws on the module's front panel.

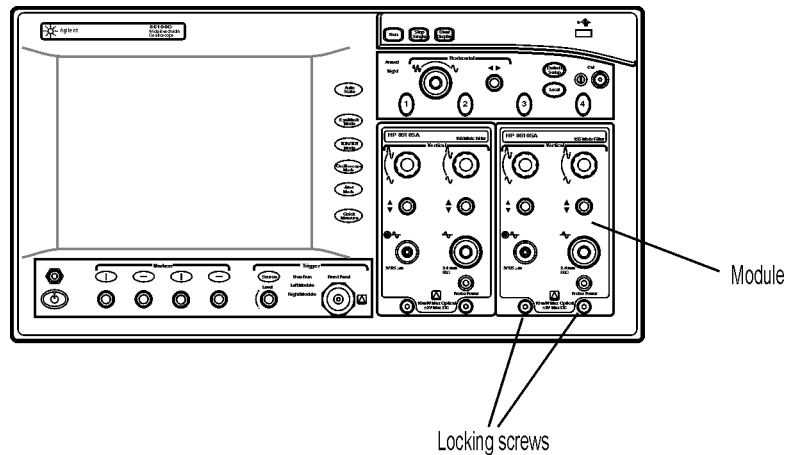


Figure 1-2. Installing a Module

Step 4. Connect the keyboard and mouse**Step 4. Connect the keyboard and mouse****NOTE**

To complete the installation, you must connect the keyboard to the 86100C. Since the 86100C has a touch screen, the use of a mouse is optional.

- 1 Connect the supplied USB keyboard to either of two USB ports located on the rear panel. Most users find it more convenient to connect the keyboard to the rear-panel leaving the front-panel USB port available for the USB flash drive. Rear-panel PS/2 connectors are also provided in case you want to use a PS/2 keyboard or pointing device. Older AT style (DIN 5) keyboards will require an adapter that is available at many computer stores.

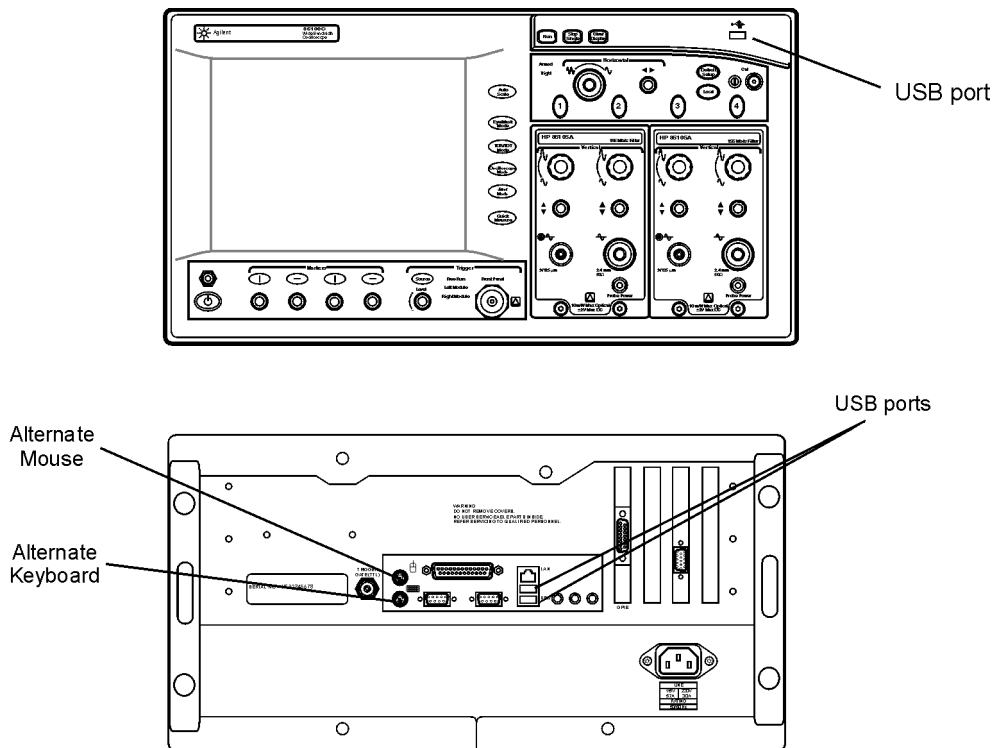


Figure 1-3. Accessory Connections

- 2 Connect the optional mouse to any available USB port that is located on the instrument including the two USB ports located on the keyboard.

Step 5. Connect a printer (Optional)

Perform this step if you plan to connect a printer directly to the serial, parallel, or USB ports that are located on the 86100C rear panel. If you have a parallel (Centronics) printer, you will need a parallel printer cable, such as an C2950A (2 m) or C2951A (3 m) cable. If you have a serial printer, you will need a 9-pin to 25-pin serial printer cable, such as an 34398A cable, plus the 34399A adapter kit. Some printers may require other cable configurations, but the 86100C has a 9-pin serial connector.

- Attach the required parallel or serial printer cable between your printer and the 86100C's rear-panel connector.

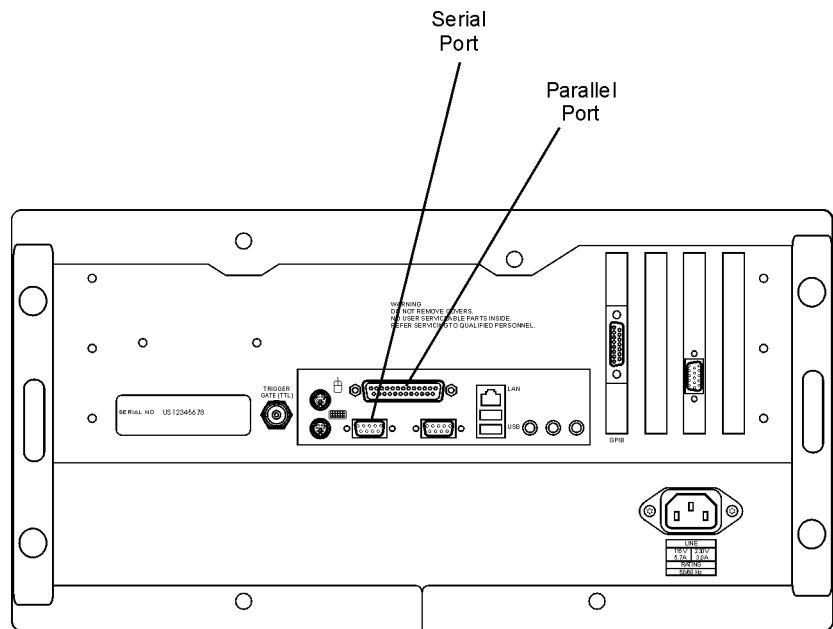


Figure 1-4. Location of Parallel and Serial Printer Ports

Support for printers with Plug and Play support will automatically be installed when the instrument is first turned on. For other printers, use the **Add Printer Wizard** from the Windows XP desktop. From the Windows **Start** menu, click **Printers and Faxes**, and then click **Add a printer**.

Step 6. Connect the power

CAUTION

Always use the three-prong AC power cord supplied with this instrument. Failure to ensure adequate earth grounding by not using this cord may cause product damage.

CAUTION

Do not connect ac power until you have verified the line voltage is correct as described in [Table 1-3](#). Damage to the equipment could result.

- Connect the line cord as shown in the figure below.

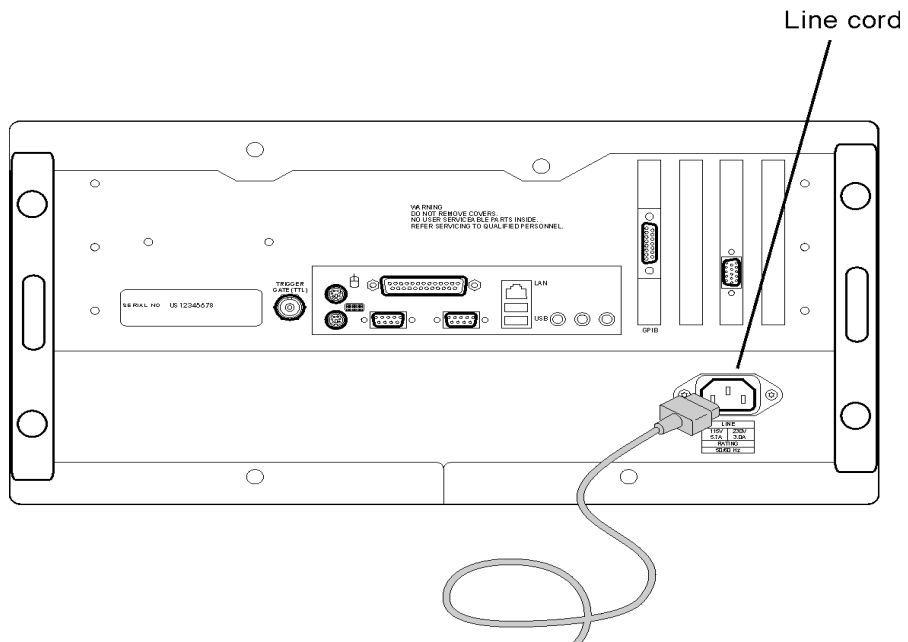


Figure 1-5. Line Cord Connector on 86100C Rear Panel

The 86100C automatically adjusts for line input voltages in the range of 100 to 240 VAC. There is no voltage selection switch. The line cord provided is matched by Agilent to the country in which the order originates. Refer to [Table 1-4, “Available Line Cords,” on page 1-14](#) for a list of other available line power cords.

CAUTION

This instrument has autoranging line voltage input. Be sure the supply voltage is within the specified range.

Table 1-3. Line Power Requirements





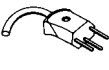
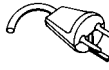


Power	115 VAC: 110 VA MAX. / 60 WATTS MAX. / 1.1 A MAX. 230 VAC: 150 VA MAX. / 70 WATTS MAX. / 0.6 A MAX.
Voltage	nominal: 115 VAC / 230 VAC CAT II range 115 VAC: 90–132 V range 230 VAC: 198–254 V
Frequency	nominals: 50 Hz / 60 Hz range: 47–63 Hz

CAUTION

Windows XP registry: If the Infiniium DCA is mounted in a rack or cabinet, do not use the system power switch to disconnect power from the instrument. Instead, use the Infiniium DCA front-panel power switch. Using the system power switch may corrupt the Windows XP registry requiring you to perform the recovery procedure to restore normal operation to the Infiniium DCA. [Refer to “To recover the 86100C Drive-C” on page 2-24.](#)

Installing the 86100C
Step 6. Connect the power

Table 1-4. Available Line Cords

Plug Type		Cable Part No.	Plug Description	Length (in/cm)	Color	Country
250V		8120-1351	Straight *BS1363A	90/228	Gray	United Kingdom, Cyprus, Nigeria, Zimbabwe, Singapore
		8120-1703	90°	90/228	Mint Gray	
125V		8120-1369	Straight *NZSS198/ASC	79/200	Gray	Australia, New Zealand
		8120-0696	90°	87/221	Mint Gray	
250V		8120-1689	Straight *CEE7-Y11	79/200	Mint Gray	East and West Europe, Saudi Arabia, So. Africa, India (unpolarized in many nations)
		8120-1692	90°	79/200	Mint Gray	
125V		8120-2857p	Straight (Shielded)	79/200	Coco Brown	United States, Canada, Mexico, Philippines, Taiwan
		8120-1378	Straight *NEMA5-15P	90/228	Jade Gray	
250V		8120-1521	90°	90/228	Jade Gray	Switzerland
		8120-1992	Straight (Medical) UL544	96/244	Black	
220V		8120-2104	Straight *SEV1011	79/200	Mint Gray	Denmark
		8120-2296	1959-24507	79/200	Mint Gray	
250V			Type 12 90°			Republic of South Africa
		8120-2956	Straight *DHCK107	79/200	Mint Gray	
100V		8120-2957	90°	79/200	Mint Gray	India
		8120-4211	Straight SABS164	79/200	Jade Gray	
		8120-4600	90°	79/200		Japan
		8120-4753	Straight MITI	90/230	Dark Gray	
		8120-4754	90°	90/230		

* Part number shown for plug is the industry identifier for the plug only. Number shown for cable is the Agilent Technologies part number for the complete cable including the plug.

Step 7. Windows Setup Wizard


This step requires several minutes to prepare Windows XP using the Windows XP Setup Wizard. During the following steps, you will be instructed to “click” with the pointing device. You can use a mouse (if you connected it) or you can touch the screen with your finger.

CAUTION

Before switching on this instrument, make sure the supply voltage is in the specified range.

CAUTION

Avoid touching the screen with a sharp object, as this could result in damage to the display. Instead, use your finger.

- 1 Press the ON/OFF switch, , located at the lower left-hand corner of the front panel.

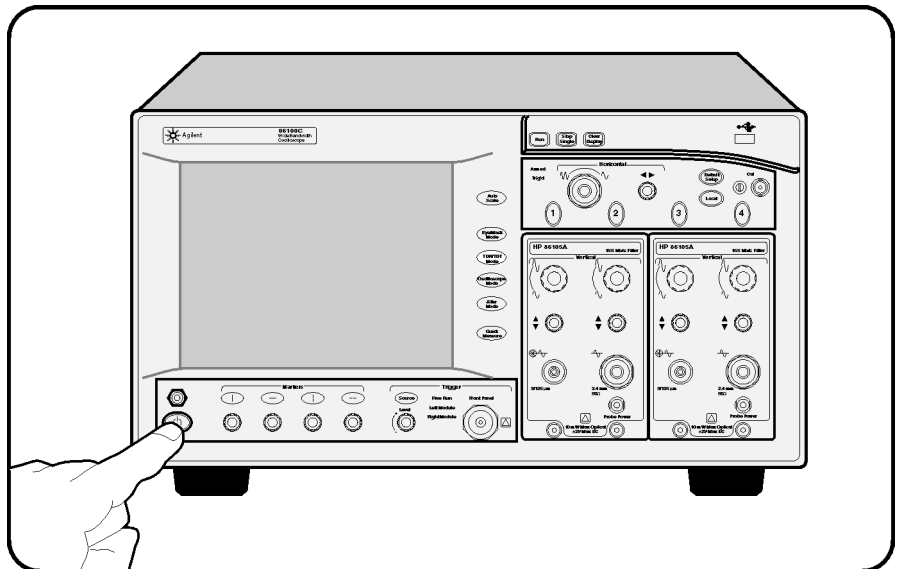


Figure 1-6. ON/OFF Switch

- 2 Wait until the **Welcome to the Windows XP Setup Wizard** appears as shown in the following figure.

Step 7. Windows Setup Wizard



Figure 1-7. Windows XP Setup Wizard

- 3 Click **Next** to display the License Agreement.

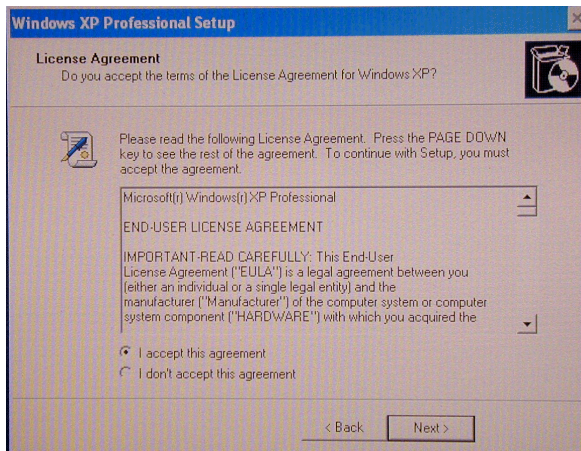


Figure 1-8. Windows XP License Agreement

- 4 Select **I accept this agreement** and then click **Next**.

- 5 Enter your name and the name of your organization or company. Click **Next**.

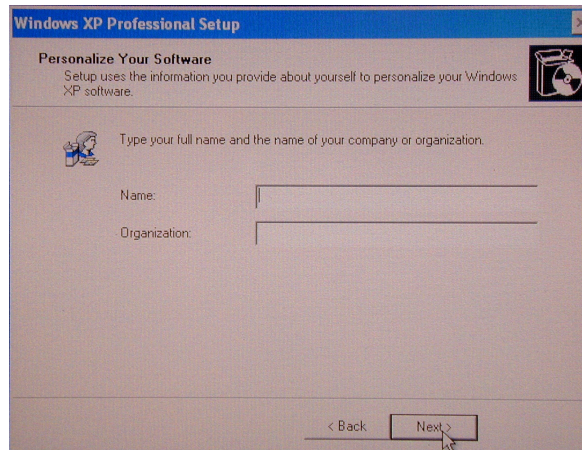


Figure 1-9. Personal Information Setup

- 6 Click **Next**.
- 7 Adjust the date, time, and time zone as needed in the displayed screen. Check automatic clock adjust for daylight saving changes, if it applies to your location.

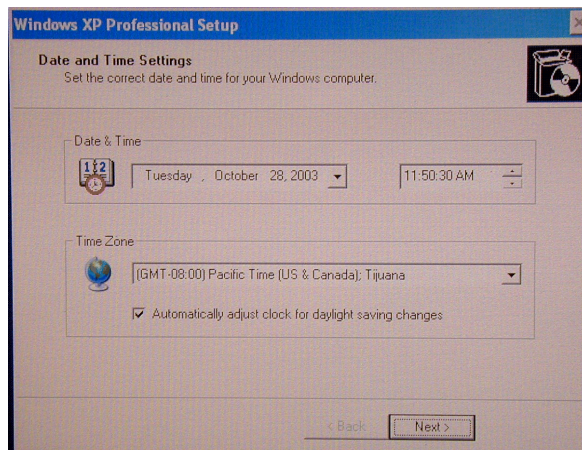


Figure 1-10. Date, Time, and Time Zone

Step 7. Windows Setup Wizard

- 8 Click **Next**. The setup will take a few moments to complete and to automatically restart the instrument. In about one or two minutes, you should see the 86100C screen screen, as shown in the following figure.

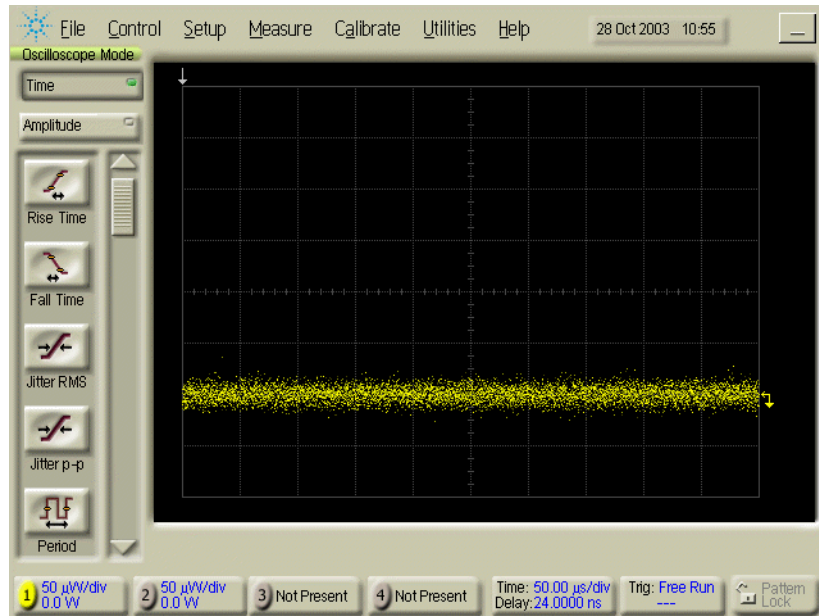


Figure 1-11. The 86100C Display

CAUTION

To ensure proper operation of the 86100C, read [“Avoid changing these Windows system settings”](#) on page 2-20.

NOTE

When you press the ON/OFF switch to turn the instrument off, there is a small time delay before you’ll see a change on the instrument. This is normal and does not indicate a problem.

Step 8. Change removable hard disk (*Option 86100C-090*)

If your instrument includes Option 86100C-090, you must repeat the Windows XP Setup Wizard procedure for the second, identical hard disk. The removable hard disk option, 86100C-090, is designed for 86100C instruments that are used in a secure environment. For more information, [refer to “To use the removable hard disk option” on page 1-31](#).

- 1** Turn off the 86100C.
- 2** Locate the hard disk lock, which is located at the upper-left corner of the 86100C's rear panel.
- 3** Insert one of the supplied keys into the hard disk lock, and turn the key counter clockwise to unlock the hard disk.

NOTE

Identical locks and keys are provided for all removable hard disks. The lock mechanically secures the disk and is not intended for security purposes.

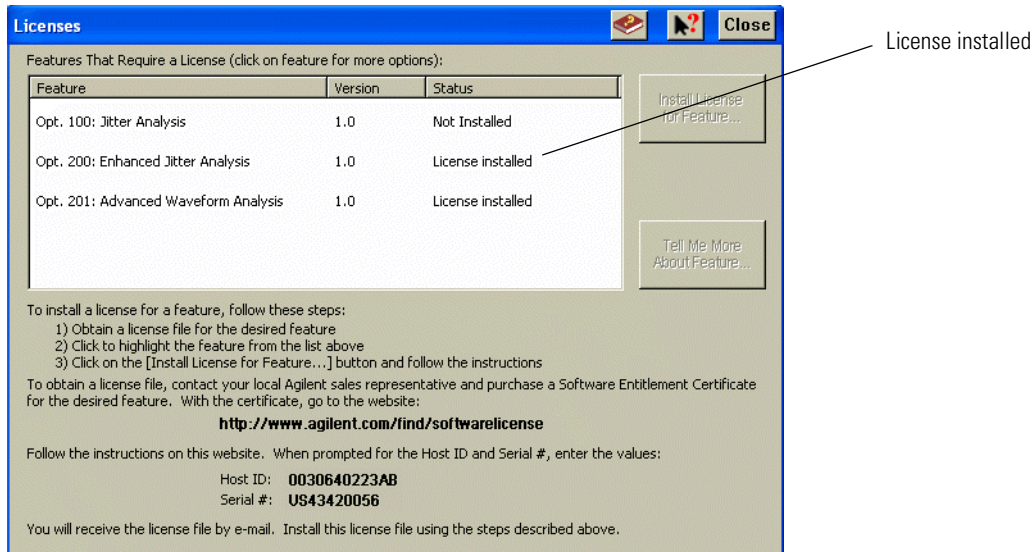
- 4** Press the button that is located beneath the lock, and pull out the hard disk.
- 5** Install the alternate hard disk. Make sure that the hard disk is oriented so that the connector on the hard disk lines up with the connector in the mainframe.
- 6** Turn the key clockwise to lock the hard disk.
- 7** Repeat [“Step 7. Windows Setup Wizard” on page 1-15](#) with the new hard disk.
- 8** Continue with [“Step 9. Install a feature license \(Optional\)” on page 1-20](#).

Step 9. Install a feature license (Optional)**Step 9. Install a feature license (*Optional*)**

If you ordered an optional feature, such as Option 200 Enhanced Jitter Analysis, with your 86100C, it was probably installed at the factory. If you ordered it, but it wasn't installed, you received a Software Entitlement Certificate that you must use to install the license on your 86100C.

To confirm if your license was installed

- 1** On the 86100C **Utilities** menu, click **Licenses**.
- 2** Check the installation status of the license in the **Licenses** dialog box.

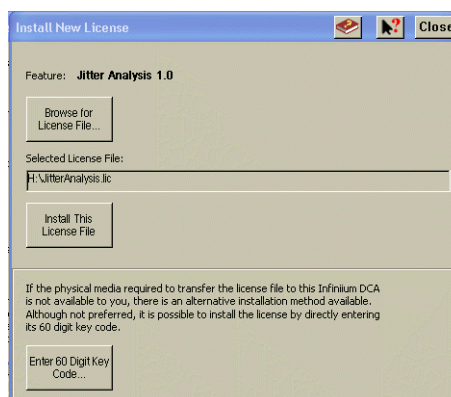
**Figure 1-12. Licenses Installed Status**

- 3** If the license that you purchased is installed, no further action is required. Continue with “[Step 10. Calibrate the touch screen](#)” on page 1-23. If your license was not installed, continue with “[To install a license](#)” on page 1-21.

Step 9. Install a feature license (Optional)***To install a license***

- 1 On the 86100C **Utilities** menu, click **Licenses**. Write down the **HostID** and **Serial #** identifiers listed on the displayed dialog box. You will need this information in the next step.
- 2 Go to the following web site to obtain your license file. You will need to enter the **HostID** and **Serial #** identifiers for your 86100C. The license file will be sent to you via email.

www.agilent.com/find/softwarelicense
- 3 After you receive your license file, copy the file to a memory location that is available to the 86100C. This could be an external USB device (for example, flash drive or CD drive) or a network drive.
- 4 On the 86100C **Utilities** menu, click **Licenses** to view the **Licenses** dialog box.
- 5 Select the feature that you want to activate and then click **Install New License**.
- 6 In the **Install New License** dialog box, do one of the following:
 - If the license file is available to the 86100C, click **Browse for License File**, find the file, and then click **Install This License File**.

**Figure 1-13. Install New License Dialog Box**

- If the license file is not available to the 86100C, manually enter a 60-digit key code. Manually entering the key code fully fulfills the installation requirements. Open the license file on your PC using a text editor such as Notepad. Look for the string **SIGN=** which marks the beginning of the 60-digit key

Installing the 86100C

Step 9. Install a feature license (Optional)

code, as shown in the following picture. In the **Install New License** dialog box, click Enter 60 Digit Key Code and enter your key code. The letters in the key code are not case sensitive, so you can enter letters in either upper or lower case.

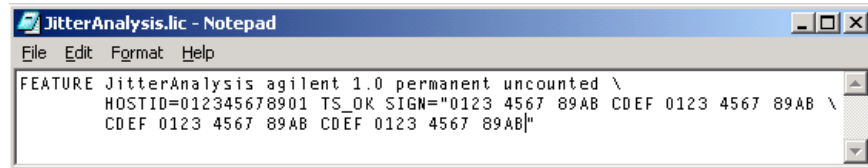


Figure 1-14. Example of the contents of a license file

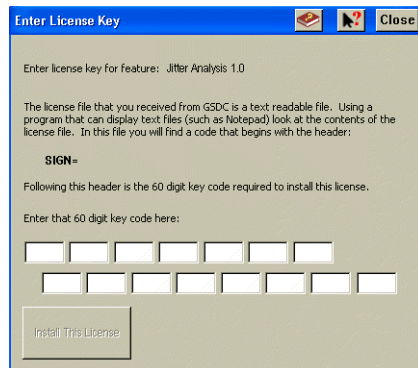


Figure 1-15. Enter License Key Dialog Box

Step 10. Calibrate the touch screen

The touch screen configuration utility aligns and orientates the touch screen with the display so that when you touch an element on the display screen, the instrument can detect the task that you want to perform. The display will always function as a touch screen, even when a mouse and keyboard are connected.

- 1 On the **Utilities** menu, choose **Touch Screen Config**. The **Pointer Device Properties** dialog box appears.
- 2 Click **Calibrate**.

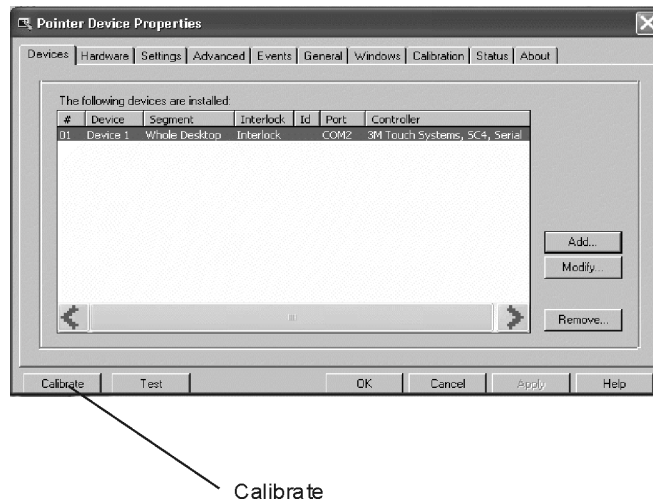


Figure 1-16. Pointer Device Properties Dialog Box

- 3 Touch the center of the **X** as it moves on the display.

The calibration will time out within 10 seconds if you do not touch the center of the **X**. You can also press **Esc** on an optional keyboard to exit the touch screen calibration.

Step 10. Calibrate the touch screen

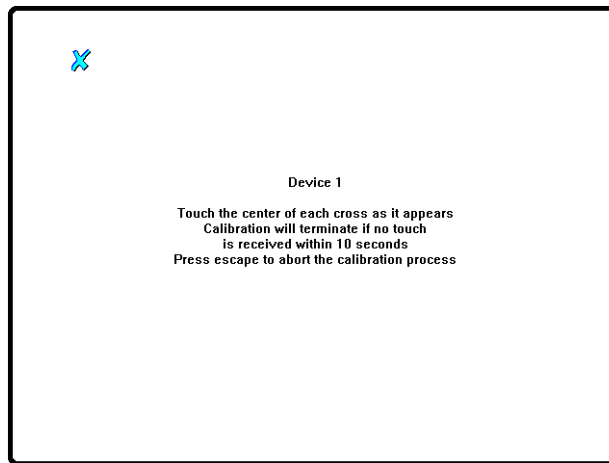


Figure 1-17. Calibration Screen

- 4 Each time that you touch the screen, an audible beep is heard. If you want to turn the audible click sound off, select the **Advanced** tab and clear the **Sound** selection. The touch sound stops as soon as the **Pointer Device Properties** dialog box is closed.
- 5 Click **OK** to close the dialog box.

Step 11. Avoid costly repairs

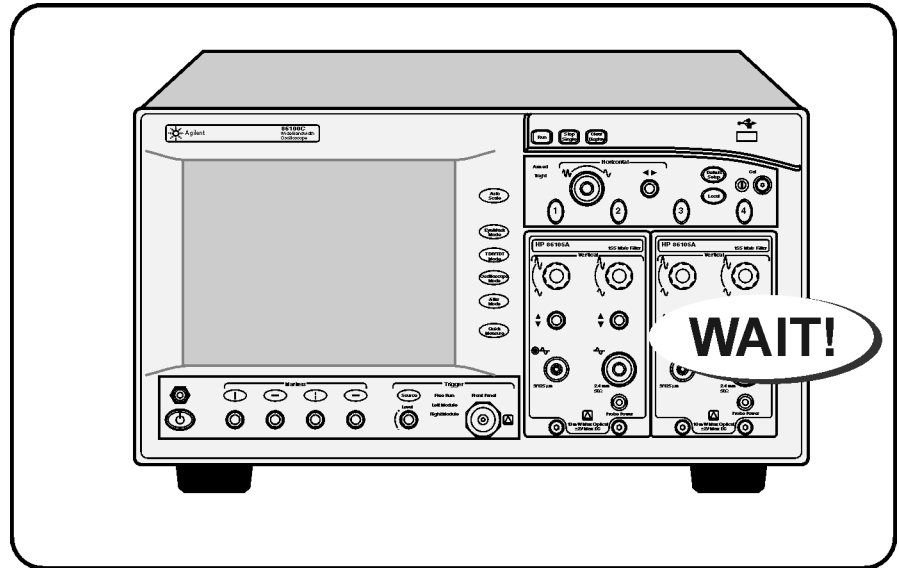


Figure 1-18. Avoid Costly Repairs

- Refer to the [“Connector Care” on page 1-38](#), before making any electrical or optical input connections.

CAUTION

Electrical channel input circuits and the trigger input circuit can be damaged by electrostatic discharge (ESD). Therefore, avoid applying static discharges to the front-panel input connectors. Prior to connecting any coaxial cable to the connectors, momentarily short the center and outer conductors of the cable together. Avoid touching the front-panel input connectors without first touching the frame of the instrument. Be sure that the instrument is properly earth-grounded to prevent buildup of static charge. Wear a wrist-strap or heel-strap.

CAUTION

Optical channel fiber-optic connectors on plug-in modules are easily damaged when connected to dirty or damaged cables and accessories. When you use improper cleaning and handling techniques, you risk expensive instrument repairs, damaged cables, and compromised measurements. Before you connect any fiber-optic cable to the 86100C, refer to information in the online help.

Step 12. Calibrate the modules

This is the last step required for installing the 86100C and preparing it for use. Additional procedures in this section are provided, if needed. To learn about using your 86100C, be sure to read Chapter 2, “Using the 86100C” and the instrument’s built-in Help system.

A module calibration establishes calibration factors for all installed modules. The calibration factors compensate for imperfections in the measurement system (for example, variations due to ambient temperature), resulting in the best instrument precision. It is recommended that you perform this calibration routinely for best measurement accuracy.

The module calibration is recommended whenever the following occurs:

- Instrument power has been cycled
- A module has been removed and then reinserted
- A change in the temperature of the mainframe exceeds 5°C compared to the temperature of the last vertical (amplitude) calibration ($\Delta T > 5^\circ\text{C}$)
- The time since the last calibration has exceeded 10 hours

Refer to the Help for more information about instrument calibrations.

NOTE

Allow the instrument, with modules installed, to warm up for a period of at least one hour before performing a vertical calibration. This ensures that the module reaches its equilibrium temperature.

CAUTION

Electrical channel input circuits and the trigger input circuit can be damaged by electrostatic discharge (ESD). Therefore, avoid applying static discharges to the front-panel input connectors. Prior to connecting any coaxial cable to the connectors, momentarily short the center and outer conductors of the cable together. Avoid touching the front-panel input connectors without first touching the frame of the instrument. Be sure that the instrument is properly earth-grounded to prevent buildup of static charge. Wear a wrist-strap or heel-strap.

To perform a module calibration

- 1 On the **Calibrate** menu, choose **All Calibrations**.

The **All Calibrations** dialog box opens. This dialog box allows you to view the calibration status of modules and initiate the calibration.

Step 12. Calibrate the modules

- 2 Touch the **Modules** tab.

The **Modules** tab opens and allows you to perform a module calibration on either the left or right module.

- 3 Touch the **Calibrate Module** button (located at the bottom of the tab) for the module you need to calibrate. This starts the module calibration.

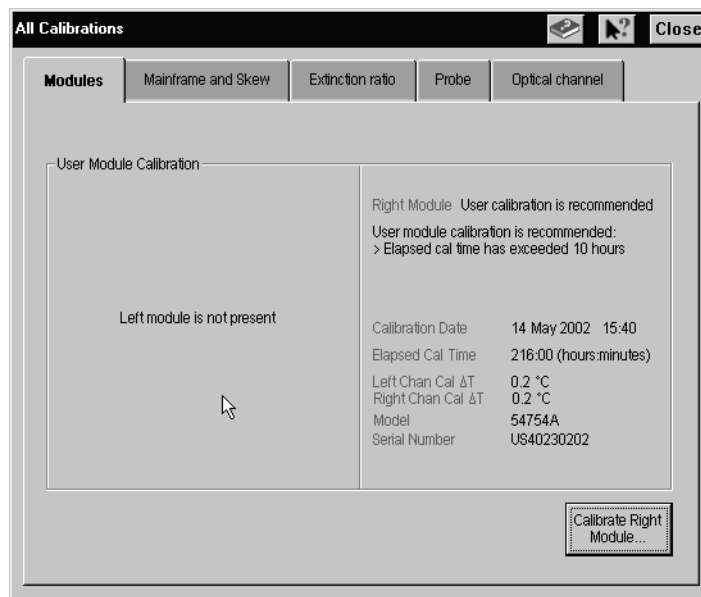


Figure 1-19. Calibrate Module Button

- 4 Remove all external devices and signals from the module.

The module calibration uses known signal levels in the instrument. Introducing an outside signal source will interfere with the calibration factors and decrease the accuracy of the calibration.

- 5 Touch **Continue**. A progress indicator appears.

Step 12. Calibrate the modules

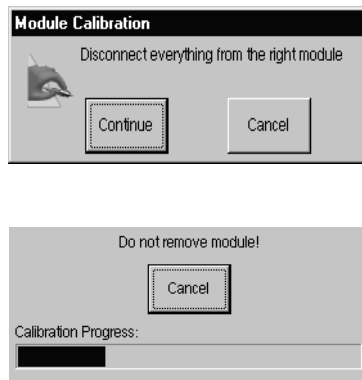


Figure 1-20. Calibration Progress

- 6** After the calibration completes, choose **All Calibrations** on the **Calibration** menu.
- 7** The **Modules** tab shows the status of the calibration and should indicate that the "Current user module calibration is valid."

To configure a LAN connection

You can configure the 86100C on a LAN for file sharing and using network printers. If you do not know how to set up a network, contact your network administrator or use the Windows XP Professional on-line help. The network setup is different for every company. Your company's network administrator can set up your instrument with the appropriate client, protocol, and configuration for your local area network (LAN). If you plan on sharing your instrument's hard disk drive with other computers on your LAN, the network administrator should enable file sharing as part of the network setup.

- 1 Connect your LAN cable to the rear-panel RJ-45 connector.

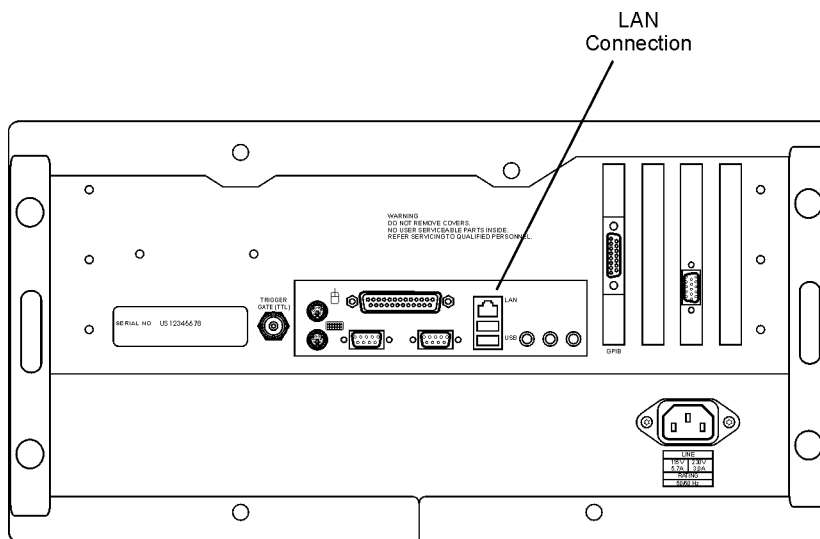


Figure 1-21. LAN Connector

- 2 Start the 86100C.
- 3 Click **Exit** on the **File** menu to close the 86100C DCA application.

To configure a LAN connection

- 4 Click Start to view the Windows Start Menu.



Figure 1-22. Windows Start Menu

- 5 Click **My Computer** to set up a network connection, map a network drive, or share an 86100C folder. You can share any folder on the USER (D:) drive. Click **Help and Support** to get detailed information.

To use the removable hard disk option

The removable hard disk option, 86100C-090, is designed for 86100C instruments that are used in a secure environment. Because the hard disk is easily removed from the instrument, you can protect any sensitive data. The following two procedures are provided in this section:

[To declassify instrument memory 1-31](#)

[To exchange the removable hard disks 1-33](#)

The removable hard disk option comes with two hard disks. One is installed in the instrument, and one is provided separately. When shipped from the factory, both hard disks include identical operating system, applications, factory calibration, and licensing files. You simply exchange the hard disks, and the instrument is ready to use.

Both drive C (INFINITIUM) and drive D (USER) are located on the hard disk. Drive C contains the operating system, the 86100C application, and any factory installed or user installed applications. Drive C also contains factory calibration data and application licenses, which are automatically backed up to drive D. Drive D contains backup files and user files including data files.

CAUTION

Use standard anti-static precautions when handling removable hard disks to avoid damaging the disks.

To declassify instrument memory

Perform this procedure before removing the 86100C from a secure area.

- 1** Turn the 86100C on.
- 2** Press the **Default Setup** key two consecutive times. (Press **Default Setup**, then immediately press **Default Setup** again.)

The instrument always maintains its current and prior settings in non-volatile RAM, so that when you power up the instrument, the settings will be the same as when it was last powered off. This step resets the current and prior instrument state settings to their default settings by erasing the states that are stored in non-volatile RAM.

- 3** Clear channel memory (overwrite with noise) using the following steps:
 - a** Install two measurement modules, and press all four front-panel Channel keys to enable all four channels. The Channel keys are located above the modules. Do not connect any signals.

Installing the 86100C

To use the removable hard disk option

- b** On the **Setup** menu, click **Acquisition** to open the **Acquisition** dialog box.
- c** On the **Waveform** tab, click **Manual** and enter a value of 4096.
- d** Close the **Acquisition** dialog box.
- e** On Option 001 instruments, click the **Pattern Lock** button shown in [Figure 1-23](#). When the **Pattern Autodetect Fail** dialog box is displayed, click **Cancel** to close the dialog box.

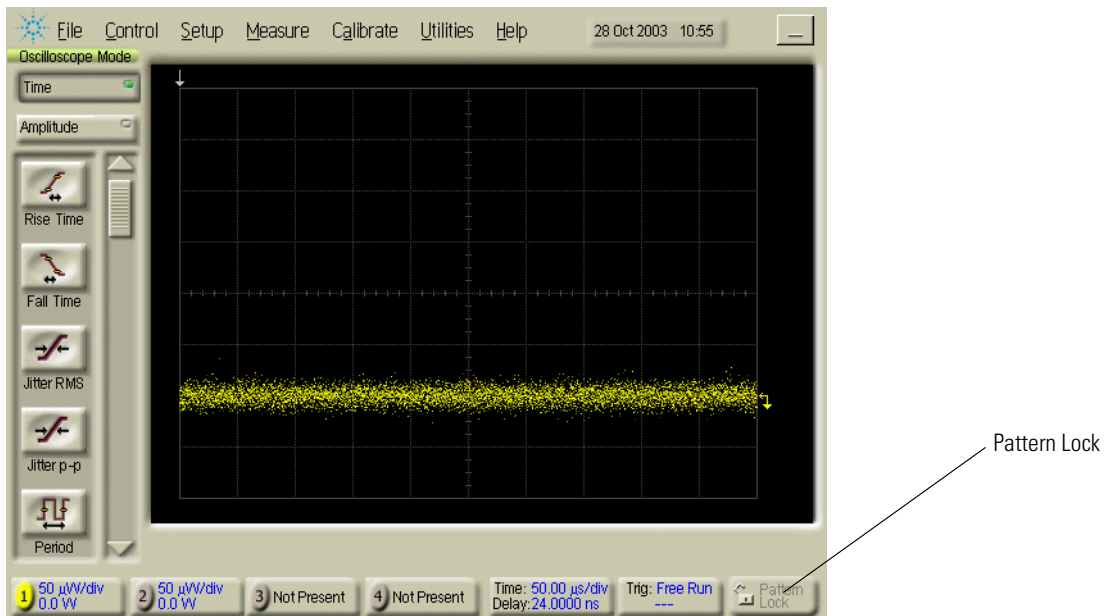


Figure 1-23. Pattern Lock Button

- 4** Reset the remote interface (GPIB) address using the following steps:
 - a** On the **Utilities** menu, click **Remote Interface**.
 - b** Enter a GPIB address value of 7 and close the dialog box.
- 5** Reset the Quick Measure utility to its default measurements using the following steps:
 - a** On the **Measure** menu, click **Quick Measure Config**.
 - b** Select the **Apply Default Setup to Quick Measure** check box, which is located at the bottom of the dialog box.
 - c** Close the dialog box.

To exchange the removable hard disks

If you are removing the 86100C from a secure area, perform the procedure [“To declassify instrument memory” on page 1-31](#) before starting the following steps.

- 1 Turn the 86100C on.
- 2 If the instrument has been returned from Agilent with a new mainframe calibration, you must save a copy of the calibration file from the current hard disk. Later in this procedure, you will install this file on the secure hard disk.
 - a On **Calibrate** menu, click **All Calibrations**. Click the **Mainframe and Skew** tab. Record the calibration date for use later in this procedure. See [Figure 1-24](#).

Calibration date: _____

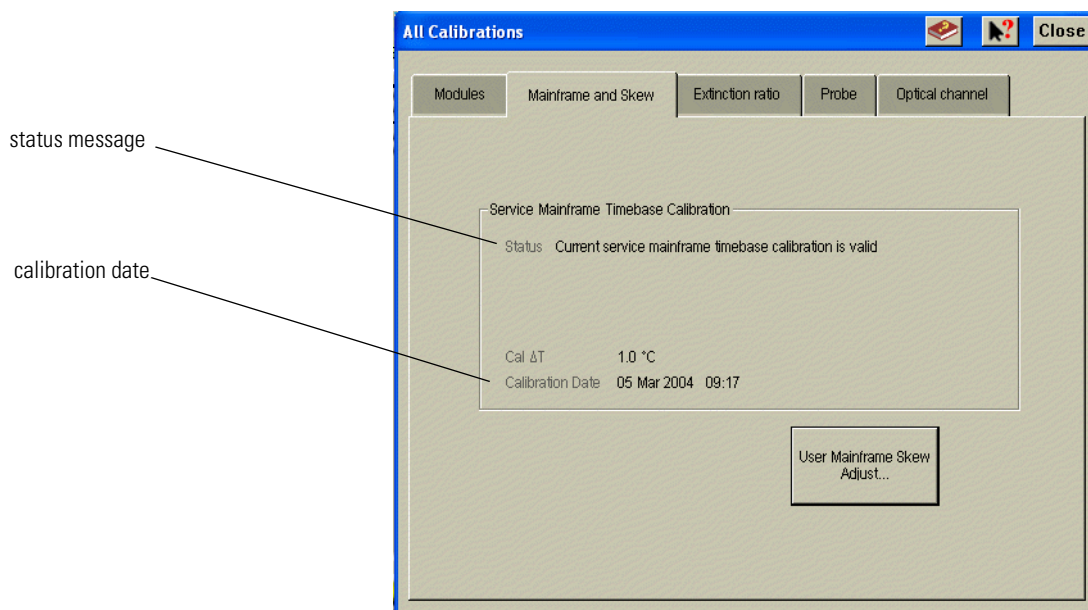


Figure 1-24. Mainframe timebase calibration status and date

- b Close the **All Calibrations** dialog box.
- c On the **File** menu, click **Exit** to close the DCA application.

To use the removable hard disk option

- d** From the **Windows Start** menu, click **My Computer**.
- e** Enter the path, `c:\scope\cal`, in the address line as shown in [Figure 1-25 on page 1-34](#). Then, press **Enter** to locate the file, `framecal.dat`.

NOTE

The folder, `c:\scope\cal`, is hidden and will not be shown if you browse for it.

- f** Copy the file, `framecal.dat`, to an external USB memory device.

- 3** Turn off the 86100C.
- 4** Locate the hard disk lock, which is located at the upper-left corner of the 86100C's rear panel.
- 5** Insert one of the supplied keys into the hard disk lock, and turn the key counter clockwise to unlock the hard disk.

NOTE

Identical locks and keys are provided for all removable hard disks. The lock mechanically secures the disk and is not intended for security purposes.

- 6** Press the button that is located beneath the lock, and pull out the hard disk.
- 7** Install the alternate hard disk. Make sure that the hard disk is oriented so that the connector on the hard disk lines up with the connector in the mainframe.

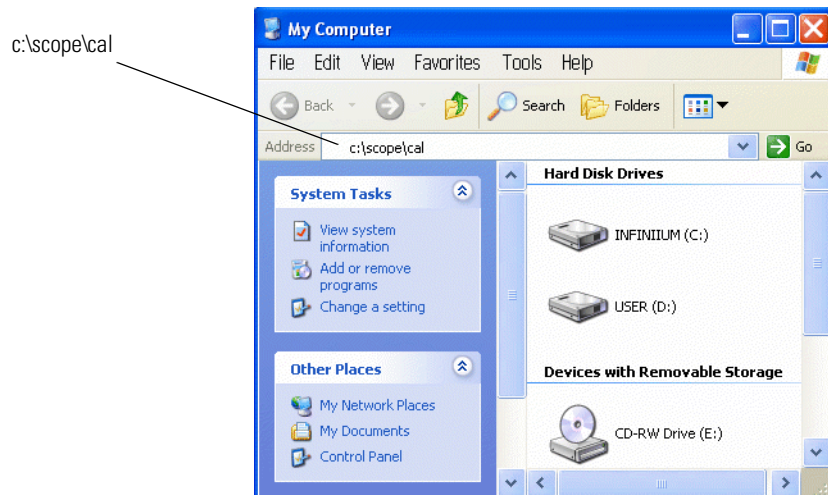


Figure 1-25. Locating the file `framecal.dat`

- 8** Turn the key clockwise to lock the lock.

- 9** If you saved the mainframe calibration file in [Step 2](#), perform these steps:
 - a** Turn on the 86100C, and click **Exit** on the **File** menu to close the DCA application.
 - b** From the **Windows Start** menu, click **My Computer**.
 - c** Locate the file, framecal.dat, that you copied to your external USB memory device.
 - d** Copy this file and paste the file into the folder, c:\scope\cal. Locate the folder by entering the path, c:\scope\cal, in My Computer as shown in [Figure 1-25](#). Click **OK** to overwrite the current file.
 - e** Turn the 86100C off and then on again.
 - f** Click **All Calibrations on the Calibrate** menu. Click the **Mainframe and Skew** tab.
 - g** Confirm that the displayed calibration date is the same date that you recorded in [Step 2](#). Verify that the displayed status message reads “Current service mainframe timebase calibration is valid.” See [Figure 1-24 on page 1-33](#).

To connect an external display

To connect an external display

You can connect a VGA-compatible display to the 86100C to provide a larger viewing area of the screen.

- 1 Connect the display cable to the rear-panel VGA connector. This connector is labeled External Display on [Figure 1-26](#).
- 2 Tighten the retaining screws.
- 3 Connect the external display.

The rear-panel VGA connector labeled Second Desktop Connection on [Figure 1-26](#) is provided for use of the Windows second desktop feature. Refer to Windows XP Help for information on using a second desktop.

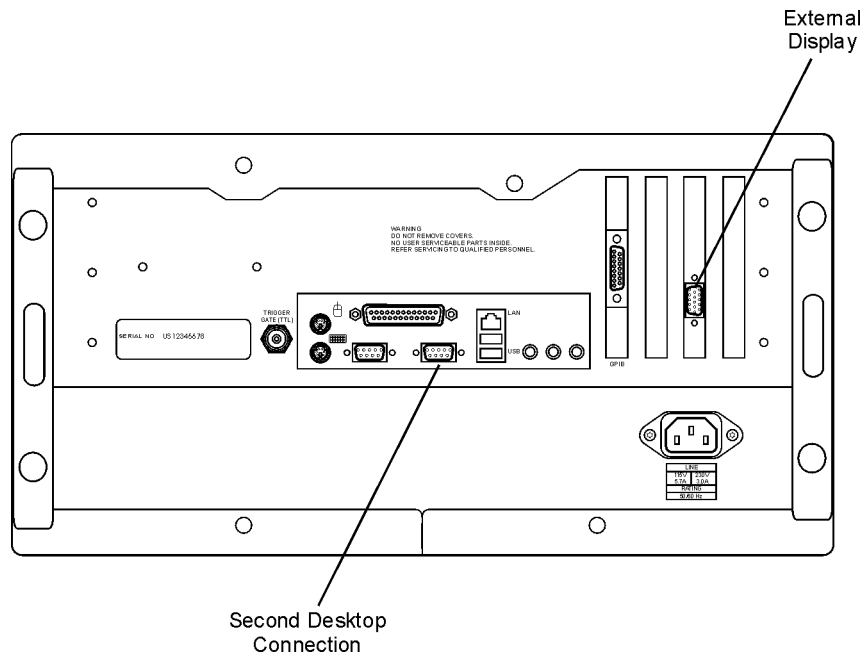


Figure 1-26. External Monitor Connector

To clean the 86100C

Clean the 86100C using a soft cloth slightly dampened with a mild soap and water solution.

WARNING

To prevent electrical shock, disconnect the Agilent Technologies model 86100C from mains before cleaning. Use a dry cloth or one slightly dampened with water to clean the external case parts. Do not attempt to clean internally.

CAUTION

Do not use too much liquid in cleaning the oscilloscope. Water can enter the front panel, damaging sensitive electronic components.

Connector Care

Damage to 86100C electrical and fiber-optic input connectors (as well as connectors on calibration and verification devices, test ports, cables, and other devices) can degrade measurement accuracy and damage instruments. Replacing a damaged electrical and fiber-optic connectors can cost thousands of dollars, not to mention lost time! This expense can be avoided by observing some important precautions.

After reading the this overview, refer to **Connector Care** in the 86100C Help for detailed information. You'll find procedures for connecting and cleaning as well as accessories. To access the Help, turn on the 86100C and click **Contents** on the **Help** menu.



Figure 1-27. Connector Care Information in Help

Electrical Connections

WARNING

If flammable fluids are used to clean connectors, the fluid shall not be placed on the instrument during, use or when connected to mains voltage. Cleaning the connectors shall take place in ventilated area to allow fluid vapors to dissipate, and reduce the risk of fire.

CAUTION

The input circuits can be damaged by electrostatic discharge (ESD). Therefore, avoid applying static discharges to the front-panel input and trigger connectors. Before connecting any coaxial cable to the connectors, momentarily short the center and outer conductors of the cable together. Avoid touching the front-panel input connectors without first touching the frame of the instrument. Be sure the instrument is properly earth-grounded to prevent buildup of static charge.

CAUTION

Electrostatic discharge (ESD) can damage or destroy electronic components. Coaxial cables with both ends unconnected may store electrostatic charges. Before connecting any coaxial cable of this sort to a device or instrument, momentarily short the center and outer conductors of the cable. When making connections, ensure the proper use of a grounded, resistor-isolated wrist strap.

Advances in measurement capabilities make connectors and connection techniques more important than ever. Observing simple precautions can ensure accurate and reliable measurements.

Handling and storage

- Keep connectors clean
- Extend sleeve or connector nut
- Use plastic endcaps during storage
- Do not touch mating plane surfaces
- Do not set connectors contact-end down

Visual inspection

- Inspect all connectors carefully before every connection
- Look for metal particles, scratches, and dents
- Do not use damaged connectors

Cleaning

- Clean with compressed air first
- Clean the connector threads
- Do not use abrasives
- Do not get liquid onto the plastic support beads
- Making connections
- Align connectors carefully

Electrical Connections

- Make preliminary connection lightly
- To tighten, turn connector nut only
- Do not apply bending force to connection
- Do not over tighten preliminary connection
- Do not twist or screw in connectors
- Do not tighten past the "break" point of the torque wrench

Using Connector Savers

Connector savers are useful in prolonging instrument life and ensuring better quality measurements. Refer to the online help for a list of commonly used connector savers.

3.5 mm and SMA Connectors

Precision 3.5 mm microwave connectors are compatible with an SMA connector within its specification. Due to the variable quality of the SMA connector, mating with an SMA can sometimes cause severe damage to the 3.5 mm connector. To ensure measurement accuracy, use 3.5 mm precision connectors. However, you can use SMA connectors if special care is taken when mating the connectors, and all connectors are undamaged and clean. Before each use, check the mechanical dimensions of all connectors with a connector gauge to make sure that the center conductors are positioned correctly.

CAUTION

A male SMA connector pin that is too long can smash or break the delicate fingers on the precision 3.5 mm female connector.

CAUTION

Some precision 3.5 mm female connector fingers are very tight and can pull the center pin of their mates out past specifications when the connectors are disconnected. If such a male pin is inserted into a female connector, it can cause considerable damage by pushing the female center conductor back too far. Be aware of this possibility and check all connectors before mating them again.

1.85 mm Connectors

The 1.85 mm connectors are used with many of the Agilent 86100 series plug-in modules and remote heads.

CAUTION

Failure to follow the guidelines for proper connector handling and avoiding electrostatic discharge (ESD) can result in severe damage to the product. In some cases, the 1.85 mm connector is an integral part of the electrical sampler device. Therefore, by using improper cleaning and handling techniques, you risk expensive instrument repairs.

- Observe the connection techniques listed in the 86100C help.
- Clean and inspect (visually and mechanically) all connectors.
- Align connectors carefully. Look for at physical contact at all points on the mating plane surfaces.

- Make a gentle, preliminary connection. If initial alignment is correct the connector nut should thread on to the female outer conductor with minimal friction.
- If friction is encountered, STOP! Disassemble the connector immediately and determine the cause of the problem. Failure to observe this caution will lead to almost certain damage to one or both of the connectors.
- When you make a connection, turn only the connector nut. Do not rotate a device when you make a connection and do not apply lateral or horizontal (bending) force.

Fiber-Optic Connections

WARNING

If flammable fluids are used to clean connectors, the fluid shall not be placed on the instrument during, use or when connected to mains voltage. Cleaning the connectors shall take place in ventilated area to allow fluid vapors to dissipate, and reduce the risk of fire.

- Never use metal or sharp objects to clean a connector and never scrape the connector.
- Avoid matching gel and oils.

CAUTION

Agilent Technologies strongly recommends that index matching compounds *not* be applied to their instruments and accessories. Some compounds, such as gels, may be difficult to remove and can contain damaging particulates. If you think the use of such compounds is necessary, refer to the compound manufacturer for information on application and cleaning procedures.

- When inserting a fiber-optic cable into a connector, gently insert it in as straight a line as possible. Tipping and inserting at an angle can scrape material off the inside of the connector or even break the inside sleeve of connectors made with ceramic material.
- When inserting a fiber-optic connector into a connector, make sure that the fiber end does not touch the outside of the mating connector or adapter.
- Avoid over tightening connections.

Unlike common electrical connections, tighter is *not* better. The purpose of the connector is to bring two fiber ends together. Once they touch, tightening only causes a greater force to be applied to the delicate fibers. With connectors that have a convex fiber end, the end can be pushed off-axis resulting in

Fiber-Optic Connections

misalignment and excessive return loss. Many measurements are actually improved by backing off the connector pressure. Also, if a piece of grit does happen to get by the cleaning procedure, the tighter connection is more likely to damage the glass. Tighten the connectors just until the two fibers touch.

- Keep connectors covered when not in use.
- Use fusion splices on the more permanent critical nodes. Choose the best connector possible. Replace connecting cables regularly. Frequently measure the return loss of the connector to check for degradation, and clean every connector, every time.

Returning the Instrument for Service

The instructions in this section show you how to properly package the instrument for return to an Agilent Technologies service office. If the instrument is still under warranty or is covered by an Agilent maintenance contract, it will be repaired under the terms of the warranty or contract. If the instrument is no longer under warranty or is not covered by an Agilent maintenance plan, Agilent will notify you of the cost of the repair after examining the unit.

When an instrument is returned to an Agilent service office for servicing, it must be adequately packaged and have a complete description of the failure symptoms attached.

When describing the failure, please be as specific as possible about the nature of the problem. Include copies of any instrument failure settings, data related to instrument failure, and error messages along with the instrument being returned.

Please notify the service office before returning your instrument for service. Any special arrangements for the instrument can be discussed at this time. This will help the Agilent service office repair and return your instrument as quickly as possible.

Contacting Agilent Technologies

Call Center

For technical assistance, contact your local Agilent Call Center.

- In the Americas, call 1 (800) 829-4444
- In other regions, visit <http://www.agilent.com/find/assist>

Before returning an instrument for service, you must first call the Call Center at 1 (800) 829-4444

Preparing the instrument for shipping

- 1 Write a complete description of the failure and attach it to the instrument. Include any specific performance details related to the problem. The following information should be returned with the instrument.
 - Type of service required.
 - Date instrument was returned for repair.
 - Description of the problem:
 - Whether problem is either constant or intermittent.
 - Whether instrument is temperature-sensitive.
 - Whether instrument is vibration-sensitive.
 - Instrument settings required to reproduce the problem.
 - Performance data.
 - Company name and return address.
 - Name and phone number of technical contact person.
 - Model number of returned instrument.
 - Full serial number of returned instrument.
 - List of any accessories returned with instrument.
 - The original cal data disks.
- 2 Cover all front or rear-panel connectors that were originally covered when you first received the instrument.

CAUTION

Cover electrical connectors to protect sensitive components from electrostatic damage. Cover optical connectors to protect them from damage due to physical contact or dust.

CAUTION

Instrument damage can result from using packaging materials other than the original materials. Never use styrene pellets as packaging material. They do not adequately cushion the instrument or prevent it from shifting in the carton. They may also cause instrument damage by generating static electricity.

- 3 Pack the instrument. Use original packaging or comparable. Original materials are available through any Agilent office. Or, use the following guidelines:
 - Wrap the instrument in antistatic plastic to reduce the possibility of damage caused by electrostatic discharge.
 - For instruments weighing less than 54 kg (120 lb), use a double-walled, corrugated cardboard carton of 159 kg (350 lb) test strength.
 - The carton must be large enough to allow approximately 7 cm (3 inches) on

Preparing the instrument for shipping

all sides of the instrument for packing material, and strong enough to accommodate the weight of the instrument.

- Surround the equipment with approximately 7 cm (3 inches) of packing material, to protect the instrument and prevent it from moving in the carton. If packing foam is not available, the best alternative is S.D-240 Air Cap™ from Sealed Air Corporation (Commerce, California 90001). Air Cap looks like a plastic sheet filled with air bubbles. Use the pink (antistatic) Air Cap™ to reduce static electricity. Wrapping the instrument several times in this material will protect the instrument and prevent it from moving in the carton.
- 4** Seal the carton with strong nylon adhesive tape.
 - 5** Mark the carton “FRAGILE, HANDLE WITH CARE”.
 - 6** Retain copies of all shipping papers.

Installing the 86100C

Preparing the instrument for shipping

A Quick Tour	2-2
Eye/Mask Mode	2-8
To View an Eye Diagram	2-9
Jitter Mode	2-11
To measure jitter	2-12
Oscilloscope Mode	2-13
TDR/TDT Mode	2-14
Quick Measure	2-15
Optional Features and Licenses	2-16
Jitter Analysis Feature	2-17
Advanced Waveform Analysis Feature	2-17
Windows XP Professional	2-18
Avoid changing these Windows system settings	2-20
If the Infiniium DCA has a Problem	2-21
To upgrade 86100C instrument software	2-22
To downgrade 86100C instrument software	2-23
To recover the 86100C Drive-C	2-24
To restore the 86100C Drive-D	2-26

Using the 86100C

A Quick Tour

The Infiniium DCA is designed to measure a variety of high speed digital communication waveforms. You can operate the Infiniium DCA in any of four instrument modes:

- Eye/Mask Mode for eye diagram analysis and standards testing (for example, SONET/SDH, Gigabit Ethernet, and Fiber Channel).
- Jitter Mode which requires Option 001 Enhanced Trigger and Option 200. Option 200 involves purchasing licenses which can be added after the initial instrument purchase.
- TDR/TDT Mode for time domain reflectometry measurements
- Oscilloscope Mode (DC to > 70 GHz)

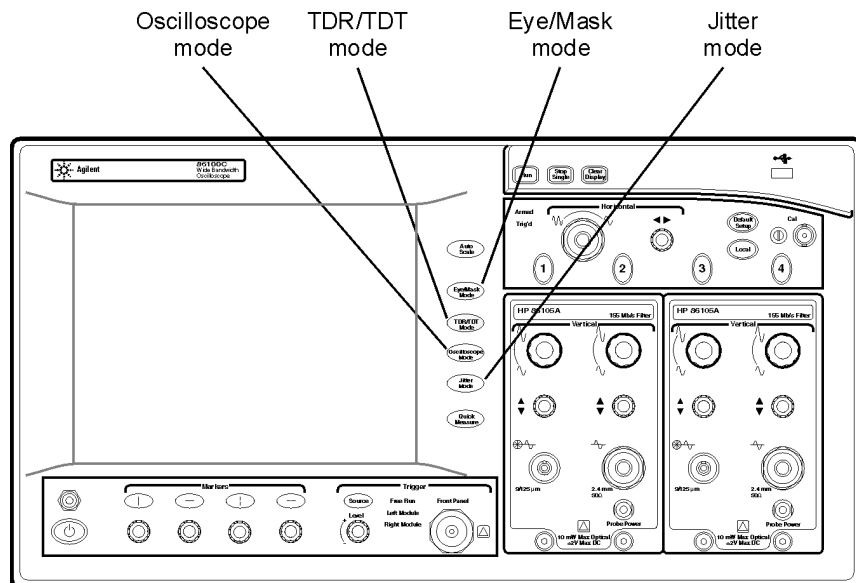


Figure 2-1. The Four Instrument Modes

Use the touch screen

You can explore the instrument's menus and change its settings by touching the display, clicking a mouse, or using front-panel knobs and buttons.

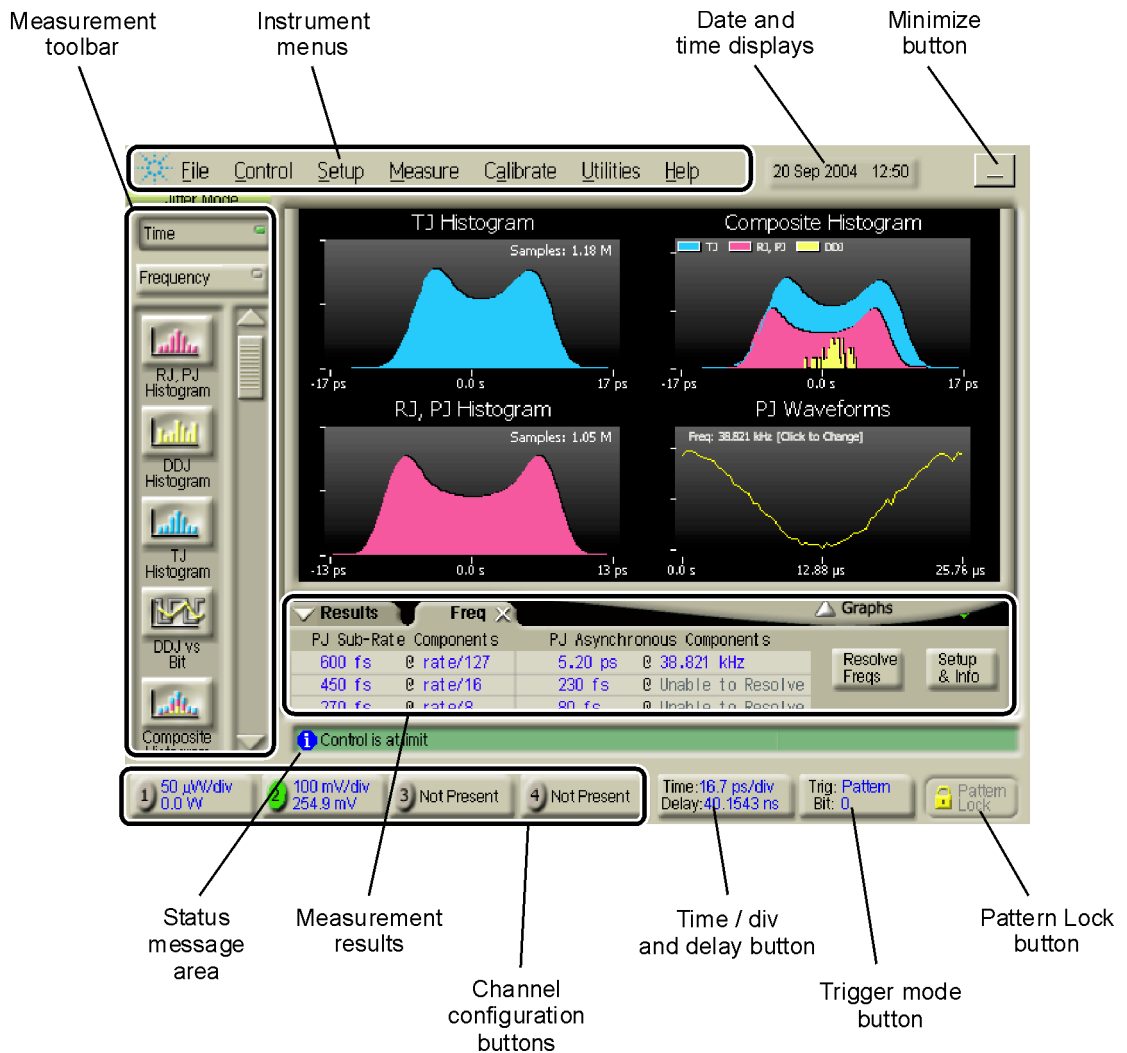


Figure 2-2. Display

A Quick Tour***You must provide a trigger input signal***

Because high-speed oscilloscopes are not capable of triggering directly on a test signal, you must first connect an external timing reference signal to the front-panel Trigger input connector. This input allows the Infiniium DCA to synchronize to the input signal. Clock recovery modules (for example, the 83496A) are available to recover the clock from the test signal.

You can select free-run triggering when an external trigger is unavailable, however, you will only be able to view the waveform for amplitude information only without any timing information. This is an easy way to examine the amplitude of a signal.

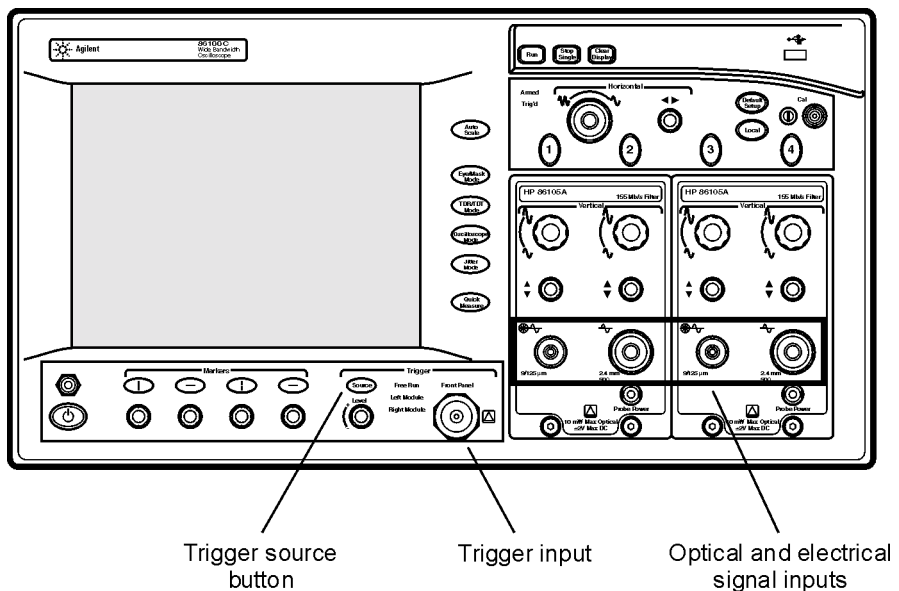
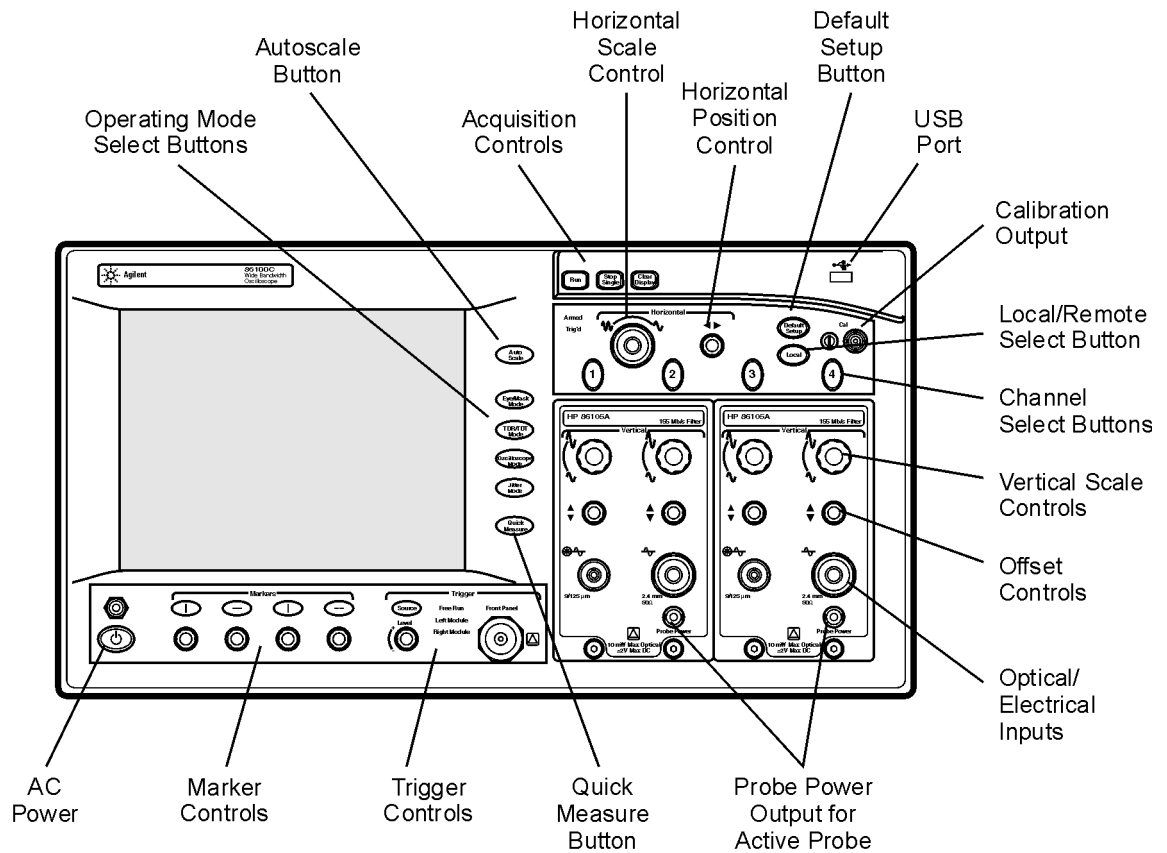


Figure 2-3. Trigger Controls

To learn more about your Infiniium DCA

- Refer to the online **Help**, which contains information that would normally be in the user's guide
- Visit our website at **<http://www.agilent.com>**. Use the keywords "Infiniium DCA" or "86100C" in your search.

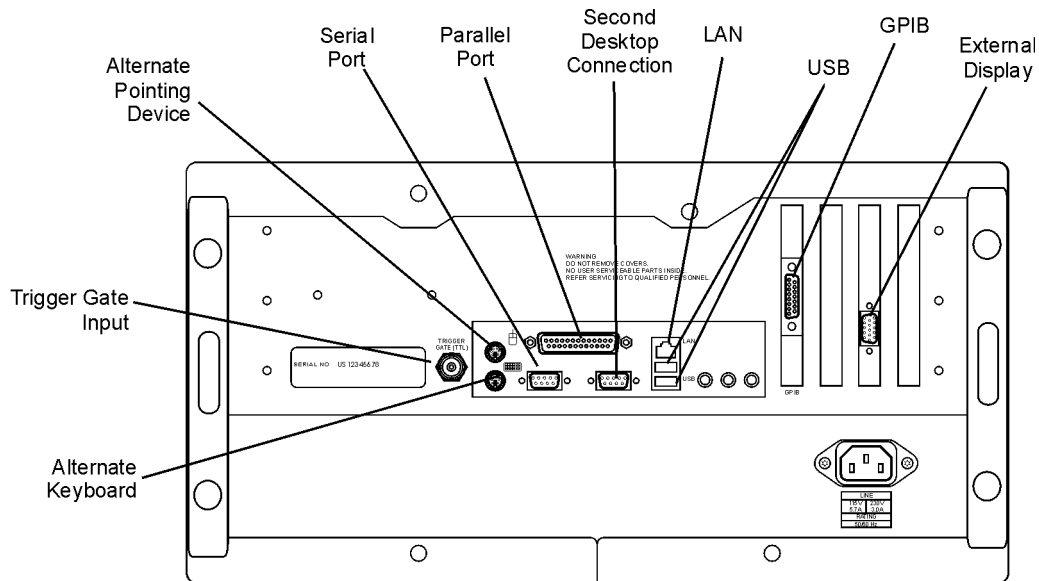
**Figure 2-4. Front-Panel Features**

A Quick Tour***Plug-in Modules***

The Infiniium DCA holds up to two plug-in modules, which can provide up to four measurement channels. Each input channel has its own vertical controls. The amplitude scale knob adjusts the amplitude scale used for the input channel. Use the amplitude offset knob to position the displayed signal. You can also set the amplitude scale and offset to specific values by touching of channel buttons shown to at the bottom of the display.

CAUTION

Electrical channel input circuits and the trigger input circuit can be damaged by electrostatic discharge (ESD). Avoid applying static discharges to the front-panel input connectors. Prior to connecting any coaxial cable to the connectors, momentarily short the center and outer conductors of the cable together. Avoid touching the front-panel input connectors without first touching the frame of the instrument. Be sure that the instrument is properly earth-grounded to prevent buildup of static charge. Wear a wrist-strap or heel-strap.

**Figure 2-5. Rear-Panel Features**

CAUTION

Optical channel fiber-optic connectors are easily damaged when connected to dirty or damaged cables and accessories. When you use improper cleaning and handling techniques, you risk expensive instrument repairs, damaged cables, and compromised measurements. Before you connect any fiber-optic cable to the digital communications analyzer, [refer to “Connector Care” on page 1-38.](#)

NOTE

You can use 8348x and 5475x series plug-in modules. In addition to a complete line of modules designed specifically for this instrument, modules designed for use with Agilent 83480A and 54750A mainframes can also be installed into the Infiniium DCA. (The 83495A clock recovery module is the exception to this numbering scheme and was designed specifically for use with 86100-series mainframes.) The 8348x and 5475x series plug-in modules are equipped with a trigger input on the individual module front panels. Repeatedly press the Infiniium DCA’s front-panel Trigger Source button until the label for the desired trigger source is lit.

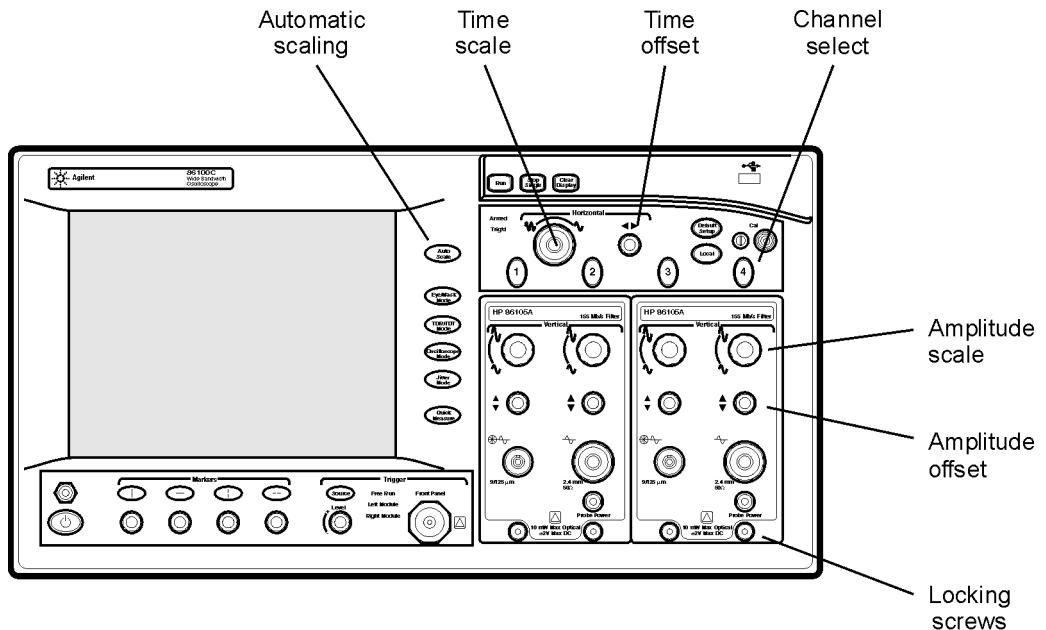
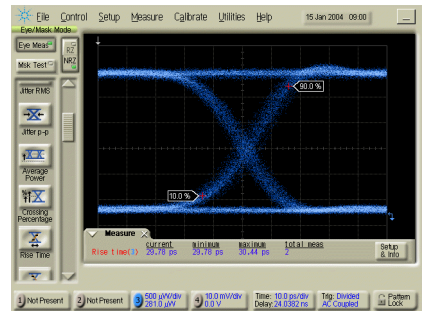


Figure 2-6. Amplitude and time adjustments

Eye/Mask Mode

The Eye/Mask mode allows you to perform NRZ (Non-Return to Zero), or RZ (Return to Zero) eye diagram measurements and eye mask tests. The eye diagram is typically produced by triggering the instrument with a synchronous clock signal.

Eye/Mask mode measurements only work when an eye diagram, and not a pulse, is present on the screen. Measurements made on a pulse waveform while in Eye/Mask mode will fail.

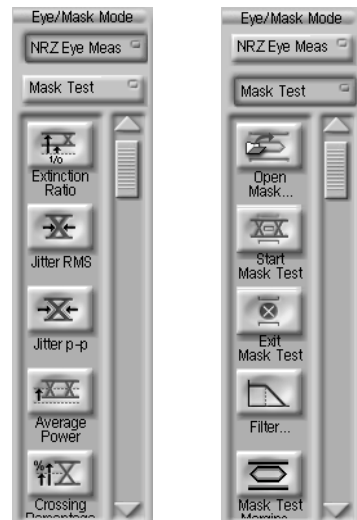


Once you are in Eye/Mask mode, press the Autoscale button. This ensures that an optimum eye diagram is displayed on the graticule. An optimum eye diagram consists of a full display of the eye in addition to portions of the waveform preceding and following the eye.

When you select the Eye/Mask mode, the measurement toolbars shown here appear. These measurement toolbars include measurements such as rise time, fall time, jitter, and extinction ratio, as well as the mask test start and stop controls.

Eye measurement and mask test results appear below the display graticule. A maximum of four eye measurement test results are displayed and include any failures or instrument messages that may occur.

To learn more about the Eye/Mask mode and switching from NRZ to RZ measurement mode, consult the **Help**.



To View an Eye Diagram

When learning to use the instrument, practice viewing a PRBS signal, which will have a varied number of ones and zeros and will produce a classic eye diagram.

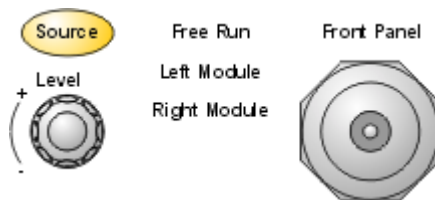
NOTE

The 86100C **Help** contains many more measurement procedures for Eye/Mask mode.

- 1 Select a DCA module that is compatible with the type of signal that you are measuring.
- 2 Install the module into the DCA mainframe. You don't have to turn the mainframe off before installing the module.
- 3 Connect the cable with the signal to be measured to the module's front-panel channel input connector.
- 4 Connect a synchronous clock signal to the front-panel **Trigger** input connector. If you don't have a synchronous clock signal, install and setup a clock recovery module.
- 5 Press the **Default Setup** button to place the instrument in a known start-up state.
- 6 Press the channel button to select the module input channel that you are using. The channel button will be lit when a channel is selected.



- 7 Press the front-panel **Source** button to select triggering on the **Front Panel** connector. If you are using a clock recovery module, select Left Module or Right Module to use the recovered clock, and refer to clock recovery modules for more information on using other settings.



To View an Eye Diagram

- 8 On the display, click the **Trigger** button to open the **Trigger** dialog box. Or, on the **Setup** menu, click the **Trigger**. Select the General Trigger Setup tab on the dialog box.



- 9 Locate the **Bandwidth** settings in the **Trigger** dialog box. Select **Standard** for data rates up to 3.2 GHz. This is the default bandwidth setting. If the instrument has the enhanced trigger installed (Option 001), select **Divided** for direct or divided trigger rates between 2 GHz and 13 GHz.
- 10 Close the **Trigger** dialog box.
- 11 Press the front-panel **Eye/Mask Mode** button.
- 12 On the **Setup** menu, click **NRZ Eye Mode** for a Non-Return-to-Zero data format or **RZ Eye Mode** for a Return-to-Zero data format.
- 13 Press the front-panel **Auto Scale** button. The eye diagram should be displayed.

Jitter Mode

Jitter Mode is an optional feature that, if installed, adds powerful jitter measurement capability to your Infiniium DCA. Refer to “Optional Features and Licenses” on page 2-16 for information on adding this option.

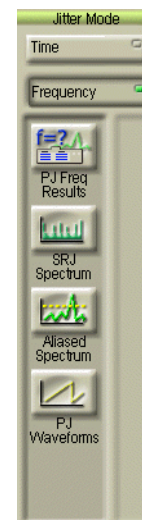
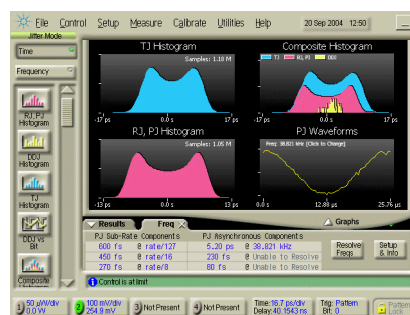
Jitter Mode measures Total Jitter (TJ) as well as Jitter component such as Periodic Jitter (PJ), Deterministic Jitter (DJ), Data-Dependent Jitter (DDJ), Random Jitter (RJ), Duty Cycle Distortion (DCD), and Inter-Symbol Interference (ISI).

The displayed graphs include a TJ histogram, RJ, PJ histogram, DDJ histogram, composite histogram, composite DDJ histogram, and DDJ versus Bit. While in Jitter Mode, you can view a representative eye diagram from which the jitter measurements are derived. You can also temporarily switch to Eye/Mask Mode in order to view the individual bit trajectories in the data pattern.

The 86100C uses a pattern trigger in Jitter Mode. But, because Jitter Mode internally generates the pattern trigger and automatically detects bit rate, pattern length, and trigger divide ratio, in most cases, you don't need to know or to enter these values.

Jitter Mode requires measurement data in the NRZ coding format. Measurements can not be performed on data using RZ coding.

Consult the 86100C **Help** for more information and procedures on using Jitter Mode.



To measure jitter

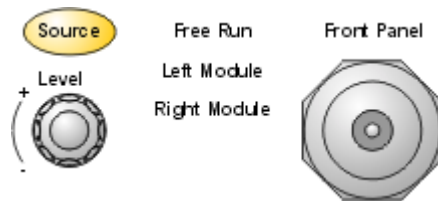
NOTE

The 86100C **Help** contains more measurement procedures for Jitter mode.

- 1 Connect the data signal to a module's front-panel channel input connector, and press the associated channel button. The channel button will be lit when a channel is selected. Turn all other channels off.



- 2 Connect a synchronous clock signal to the front-panel **Trigger** input connector.
- 3 Press the front-panel **Source** button to select triggering on the front-panel connector.

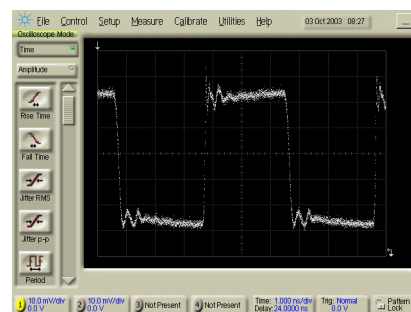


- 4 Press the front-panel **Jitter Mode** button. After the instrument measures the jitter components, the results are displayed in several graphs and in a table.



Oscilloscope Mode

Use the Oscilloscope mode for pulse type waveforms that are triggered by an external signal. Oscilloscope mode measurements only work when a single valued waveform, and not an eye diagram, is present on the screen.

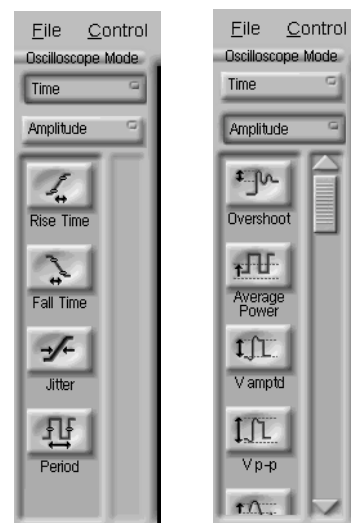


When you select the Oscilloscope mode, the measurement toolbars shown here appear. These measurement toolbars include measurements such as rise time, fall time, overshoot, and Vp-p. All measurements, with the exception of jitter, can be performed on any of the following sources: channels, waveform memories, and math functions. One of the above sources must be turned on in order to perform an oscilloscope measurement.

If more than one source is turned on and you initiate a measurement, the **Enter Measurement Info** dialog box opens. This dialog box allows you to select the source you want to use for the measurement.

Measurement results appear below the display graticule. A maximum of four pulse measurement test results are displayed and include any failures or instrument messages that may occur.

To learn more about the Oscilloscope mode, consult the **Help**.



TDR/TDT Mode

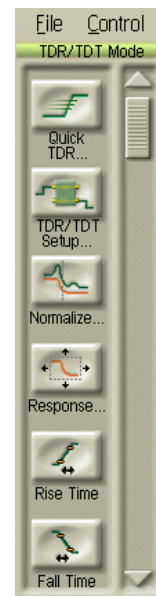
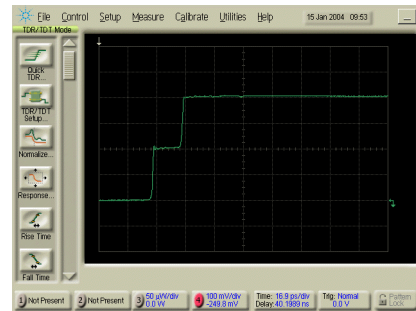
The TDR/TDT mode allows you use time domain reflectometry (TDR) to verify the proper functioning of the physical components of your device under test using a time-delayed electrical pulse. You can also use time domain transmission (TDT) to measure both the attenuation and propagation delay of your device.

TDR/TDT mode measurements are made using a single-ended or differential TDR/TDT 5475x series plug-in module.

When you select the TDR/TDT mode, the measurement toolbar shown here appears. This measurement toolbar includes tasks to set up the stimulus and destination for your measurement as well as normalization. Measurements such as Quick TDR, rise time, and fall time are included. Quick TDR allows you to view an immediate display of the characteristics of your device under test.

You can use markers to verify the impedance, voltage, and percent of reflection of a selected point on the waveform trace. TDR/TDT markers are initiated by turning on the X-axis marker(s) only. The Y-axis marker(s) will then track the waveform at the position determined by the X-axis marker. You can view the position of the marker values in the marker values tab located below the display graticule.

To learn more about the TDR/TDT mode, consult the **Help**.



Quick Measure

Press **Quick Measure** and the Infiniium DCA automatically performs four measurements on a displayed signal. Although there is a default set of measurements for each instrument mode, except Jitter mode, you can select the measurements to fit your needs. For example, in Oscilloscope mode the default measurements are: rise time, fall time, period, and V amplitude. In Eye/Mask mode you can also configure **Quick Measure** to perform a mask test. In Jitter mode, **Quick Measure** displays graphs and can not be configured.

To configure Quick Measure

- On the **Measure** menu, choose **Quick Measure Config**.

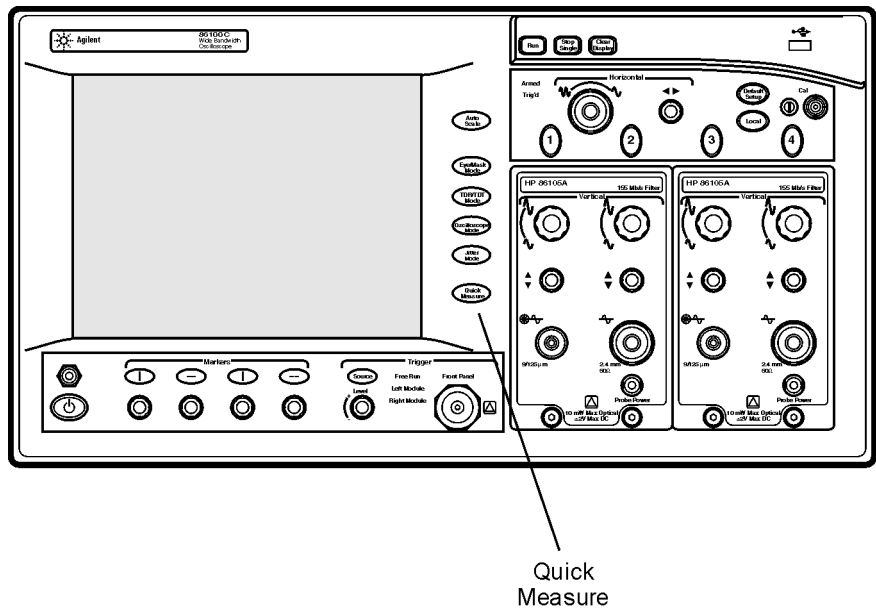


Figure 2-7. The Quick Measure Button

Optional Features and Licenses

You can purchase additional features that add measurement capabilities for your 86100C. The Jitter instrument mode is an example of an added feature. Contact your local Agilent sales representative for the latest information on available features for the 86100C. Use the **Licenses** command on the **Utilities** menu to manage licenses. The **Licenses** dialog box describes the basic steps on how to order and install a license for a feature. It also lists all available features including the status of each license. This allows you to quickly determine if a feature is activated on your 86100C. To learn more about purchasing, installing, and using a feature, consult the **Help**.

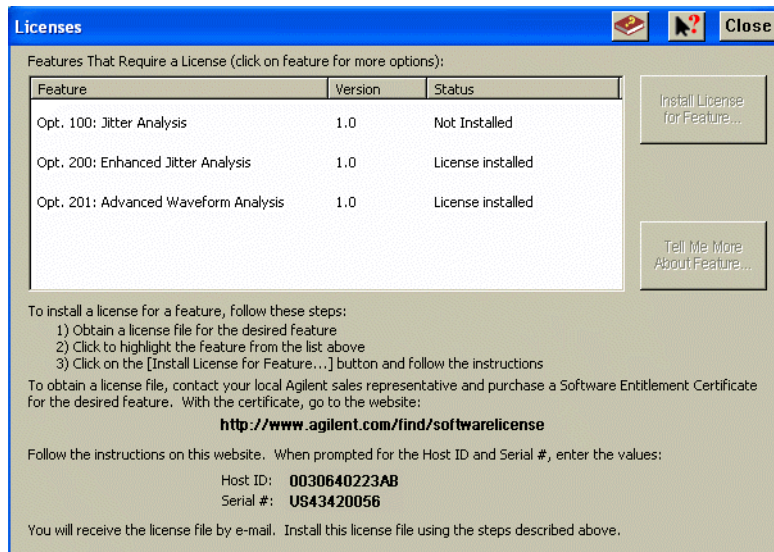


Figure 2-8. The Licenses Dialog Box



Jitter Analysis Feature

The Enhanced Jitter Analysis feature, option 86100C-200, activates the instrument's Jitter Mode, which is entered by pressing the front-panel **Jitter Mode** button. Jitter Mode provides powerful tools for measuring the following components of jitter:

- Total Jitter (TJ)
- Deterministic Jitter (DJ)
- Data-Dependent Jitter (DDJ)
- Random Jitter (RJ)
- Periodic Jitter (PJ) including analysis of sub-rate PJ components and asynchronous PJ components
- Inter-Symbol Interference (ISI)
- Duty-Cycle Distortion (DCD)

In addition to tabular results, several graphs of jitter are provided. You can even view the eye diagram that is used to perform the jitter measurements. Jitter Mode requires an 86100C with Option 001, Enhanced Trigger, installed.

Advanced Waveform Analysis Feature

The Advanced Waveform Analysis feature, option 86100C-201, provides two powerful tools for the design engineer: a Linear Feedforward Equalizer and a MATLAB Filter. It also includes the ability to import and export pattern waveforms. This feature requires that Option 001, Enhanced Trigger, is installed.

The Linear Feedforward Equalizer allows you to design and apply a finite impulse response (non-recursive) digital filter to an instrument channel or math function. With the Linear Feedforward Equalizer, you can model equalizer designs on an actual signal before designing any hardware. The equalizer allows you to open a closed eye diagram on your system with the goal of a designing a stable, compliant system.

With the MATLAB Filter application, you can design and apply software filters to a waveform and view the real-time output on the 86100C display. Because this application uses the product, MATLAB, which is a technical computing language and environment, you can write your own software filter scripts. The MATLAB Filter application does not include MATLAB. You must purchase (www.mathworks.com) and install MATLAB separately on the 86100C.

Windows XP Professional

The 86100C is an instrument running Microsoft ® Windows ® XP Professional. You can access Windows XP Professional just as you would on your personal computer. Use Windows XP Professional to manage files and folders, add, remove, and setup printing, configure networking, and install additional applications. Be sure to read [“Avoid changing these Windows system settings” on page 2-20](#). Help on Windows XP is available from the Windows XP **Start** menu. Refer to Windows help for information on adding printers and making LAN connections.

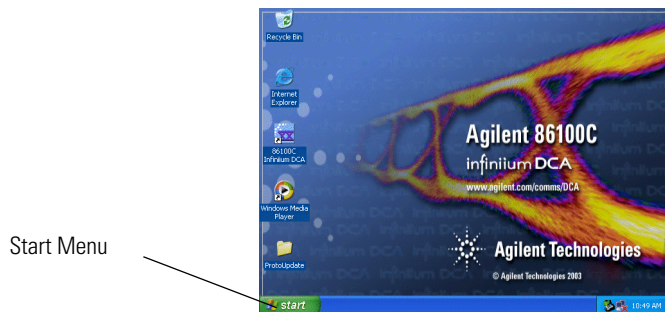


Figure 2-9. Get Windows XP Help via the Start Menu

Although the 86100C is an instrument and not a personal computer, the operating system is accessible. This makes it possible for you to install applications such as virus protection software. If the performance of the Infinium DCA application decreases while running other applications, you may need to close those applications that are demanding processor resources. Also, schedule automatic virus scans for times when you are not making measurements. Before starting a virus scan, be sure to press the front-panel **Stop Single** button to free up system resources.

CAUTION

If you install an application, it is possible that the application may not run properly. Installing an application may also disrupt the Infinium DCA application, which may require you to recover the Infinium DCA application.

CAUTION

Before installing any software, you should exit the Infiniium DCA application. Click Exit on the File menu.

CAUTION

Windows XP registry: If the Infiniium DCA is mounted in a rack or cabinet, do not use the system power switch to disconnect power from the instrument. Instead, use the Infiniium DCA front-panel power switch. Using the system power switch may corrupt the Windows XP registry requiring you to perform the recovery procedure to restore normal operation to the Infiniium DCA.

[Refer to “To recover the 86100C Drive-C” on page 2-24.](#)

To minimize the 86100C DCA application

- Click the minimize button that is located at the top right-hand corner of the display.



- On the **File** menu, click **Minimize**.
- Press ALT-spacebar on the keyboard.

To exit the 86100C DCA application

- On the **File** menu, click **Exit**.

To view the Windows Start Menu

- Press the keyboard's Windows logo key.
- Press CTRL-ESC on the keyboard.

To return to the 86100C Application

- Click the taskbar 86100C Application button, if the application is minimized.



- Double click the program icon, if you need to start the application.



Avoid changing these Windows system settings

There are several Windows system settings that can be changed to suit your own personal preferences. However, there are some system settings that you should avoid changing, because it will interfere with the proper operation of the Infiniium DCA.

- Do not change the Power Options.
- Do not change the System Properties Hardware Tab settings.
- Do not change the System Properties Advanced Tab settings.
- Do not change the Regional and Language Options Advanced Tab settings.
- Do not remove Fonts.
- Display Settings
 - Do not turn off the screen saver. The screen saver turns off the display's backlights extending their life.
 - Do not change the screen resolution from 640 by 480 pixels or the color quality from High (24 bit).
 - Do not use the Windows XP Theme.
 - Do not change "Windows and buttons" from the "Windows Classic Style".
 - Do not change the Font size to Extra Large.
 - Do not change the menu fonts or size.
 - Do not modify "1. Digital Flat Panel (640x480) on Chips and Technologies (Asilant) 65550".
 - Do not set "Intel (r) 82815 Graphics Controller" to "Use this device as the primary monitor".
- Do not delete or modify the InfiniiumAdmin user account.

NOTE

Before changing any Windows System settings outside of the Infiniium DCA application you should exit the Infiniium DCA application.

If the Infiniium DCA has a Problem

Use the information in this section to help you resolve technical problems with your Infiniium DCA. Refer to [“Avoid changing these Windows system settings” on page 2-20](#) to confirm that system settings have not been changed improperly.

WARNING

No operator serviceable parts inside. Refer servicing to qualified service personnel. To prevent electrical shock do not remove covers.

Upgrading the Instrument Software

You can install the latest version of the software for the Infiniium DCA mainframe. Newer software versions upgrade the operating system of the instrument mainframe and the plug-in modules. The instrument's software can also be downgraded to a previous version, if needed.

Infiniium DCA Hard Disk Drive Recovery

The hard drive recovery procedure restores the instrument's hard disk in the event that files and data have been corrupted. This can happen, for example, as a result of inadvertent user changes or a computer virus. The procedure for the 86100C is different from the procedure for the 86100A/B.

On 86100C instruments, the hard disk drive has two partitions: drive C and drive D. Drive C contains the operating system, the 86100C application, and any factory installed or user installed applications. Drive C also contains factory calibration data and application licenses, which are automatically backed up to drive D. Drive D contains backup files and user files including data files. If you install an application, such as virus protection, it is recommended, but not required, that you install it on drive C.

Confirm the Initial Instrument Settings

Although there are several Windows System settings that can be changed, avoid changing the settings listed in [“Avoid changing these Windows system settings” on page 2-20](#), because any changes will interfere with the proper operation of the Infiniium DCA. Confirm that these settings have not been changed.

To upgrade 86100C instrument software

After you have obtained the software upgrade file for your 86100C, perform the following steps.

- 1** Copy the software upgrade file to a USB Flash Drive, external USB CD-RW drive, LAN folder, or other device so that the file will be available to copy to the 86100C.
- 2** On the 86100C **File** menu, click **Exit** and then click **Yes** to exit the 86100C application.
- 3** On the Windows **Start** menu, click **My Computer**.
- 4** Select the D: drive and create a new folder. Give the new folder a meaningful name. For example, Software Upgrade.
- 5** Copy the upgrade file (.msi file extension) from an external memory device to your new folder.
- 6** Select the upgrade file to begin the installation. Click **Next** twice for the installation wizard to automatically uninstall the current version and install the newer version.
- 7** From the Windows desktop, double click the program icon to start the 86100C software.



To downgrade 86100C instrument software

After you have obtained the software version file for your 86100C, perform the following steps:

- 1** Copy the software downgrade file to a USB Flash Drive, external USB CD-RW drive, LAN folder, or other device so that the file will be available to copy to the 86100C.
- 2** On the 86100C **File** menu, click **Exit** and then click **Yes** to exit the 86100C application.
- 3** Click **Control Panel** on the **Start** menu.
- 4** Click **Add or Remove Programs**, and select the current 86100C Infiniium DCA software version.
- 5** Click **Remove**, and then click **Yes** to remove the current software version.
- 6** Click **My Computer** on the **Start** menu.
- 7** Select the D: drive and create a new folder. Give the new folder a meaningful name. For example, Software Upgrade.
- 8** Copy the new file (.msi file extension) from an external memory device to your new folder.
- 9** Select the new file to begin the installation. Click **Next** twice for the installation wizard to automatically install the new version.
- 10** From the Windows desktop, double click the program icon to start the 86100C software.



To recover the 86100C Drive-C

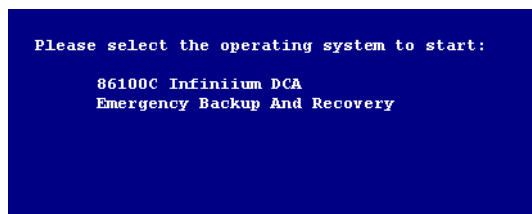
This hard disk drive recovery re-images the drive-C partition, only. Because the factory backup image resides on the hard disk, no external media is required to recover drive C. After the recovery process is complete, the Infinium DCA firmware is set to the version installed when the factory image was created. To update to a later version after the recovery is completed, refer to [“To upgrade 86100C instrument software” on page 2-22](#).

When performing this recovery procedure, all application license files and user files (including data files) are left unchanged. However, in case of a problem, you may want to make a backup of your data before you begin. After the procedure completes, the Windows XP Setup Wizard will automatically run.

NOTE

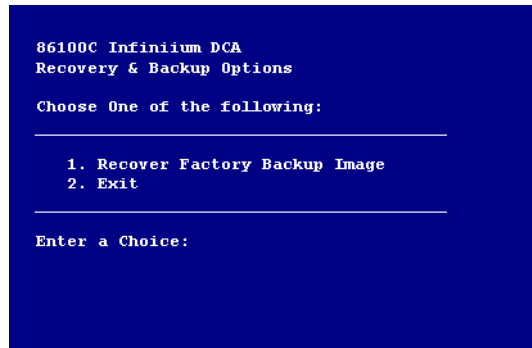
Once started, the time required to complete the recovery is approximately 10 minutes.

- 1 Connect a keyboard to the instrument.
- 2 Turn on the instrument. After approximately 30 seconds, look for the following displayed text.



- 3 Immediately, press the down arrow key on the keyboard to select **Emergency Backup And Recovery**. Then, press the **Enter** key.
- 4 After more text is displayed, press the **Enter** key to display the screen shown in

the following figure.



- 5 To enter the recovery procedure, press the 1 key.
- 6 On the next screen press **C** to recover the hard disk. Press **E** to exit the procedure.
- 7 Another screen is displayed giving you one more chance to enter or exit the procedure. Press **C** to recover the hard disk. Press **E** to exit the procedure.

NOTE

This is your last chance to abort the recovery process. Once the hard drive recovery procedure starts, do not interrupt the procedure with any key presses. The procedure requires about 10 minutes to complete.

- 8 When the "Recovery Process is complete!" message is displayed, press CLT+ALT+DEL on the keyboard.
- 9 The Windows XP Setup Wizard automatically starts. Follow the steps listed on the screen. The Certificate of Authenticity is located on the instrument's rear panel.

To restore the 86100C Drive-D

Drive D on the 86100C hard disk contains all user files including data files. It also includes backup copies of the factory calibration and application license files that are automatically created from Drive C by the instrument. To restore drive D back to factory defaults, you must reformat the partition using the Windows XP Format utility. Formatting will erase all data on drive D.

CAUTION

Performing a Drive C Recovery immediately after formatting the D partition (without restarting the instrument) results in the loss of factory calibration and any application license files. Always turn off and then restart the instrument after performing the Drive-D Restoration procedure.

- 1 On the **File** menu, click **Exit** to close the 86100C application.
- 2 Click **Start** to view the Windows Start Menu.



Figure 2-10. Windows Start Menu

- 3 Click **My Computer** and select the USER (D:) drive.
- 4 On the **File** menu, click **Format**, **Start**, and then **OK**. Do not change the default setup. Leave the **Format Options** selections unchecked.
- 5 When the **Format Complete** dialog box appears, click **OK**.
- 6 Click **Close**.

- 7 Turn off and then restart the 86100C. The 86100C automatically performs the following tasks:
 - Creates the original factory folders on drive D
 - Creates backup copies of the factory calibration and any application license files that reside on drive C.

Using the 86100C

To restore the 86100C Drive-D

Getting Help While Changing Instrument Settings 3-4
Learning About Measurement Results 3-5
Printing Topics 3-6

Using the Built-In Information System

Using the Built-In Information System

Where is the operating manual for your infiniiium DCA? It is built into your instrument! To access the built-in information system, referred to as Help, simply click **Contents** on the **Help** menu.

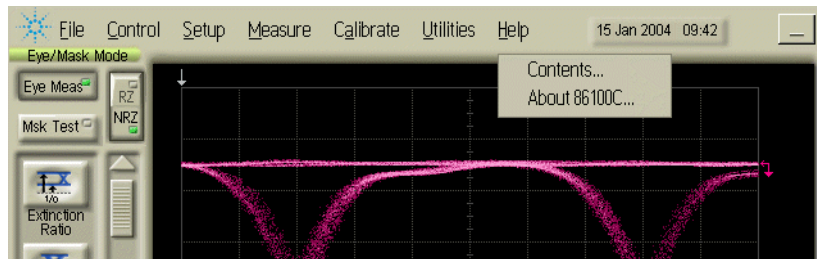
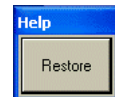


Figure 3-1. Contents on the Help menu

This will open the Contents topic that is shown in [Figure 3-2](#). Exploring the Help should be familiar to you because it is similar to other Windows applications. You can, of course, use the touch screen or the mouse to explore the Help. In addition to the main 11 topics presented in the contents, be sure to use the index buttons located along the bottom of the topic window. These can be very helpful in locating a topic of interest.

When using the Help, you can temporarily hide it so that you can see the entire display. Then, you can re-display the Help with the same topic still showing. To hide the Help, touch the **Minimize** button located at the top of the Help window. To re-display the Help, touch the **Restore** button that is shown on the display.



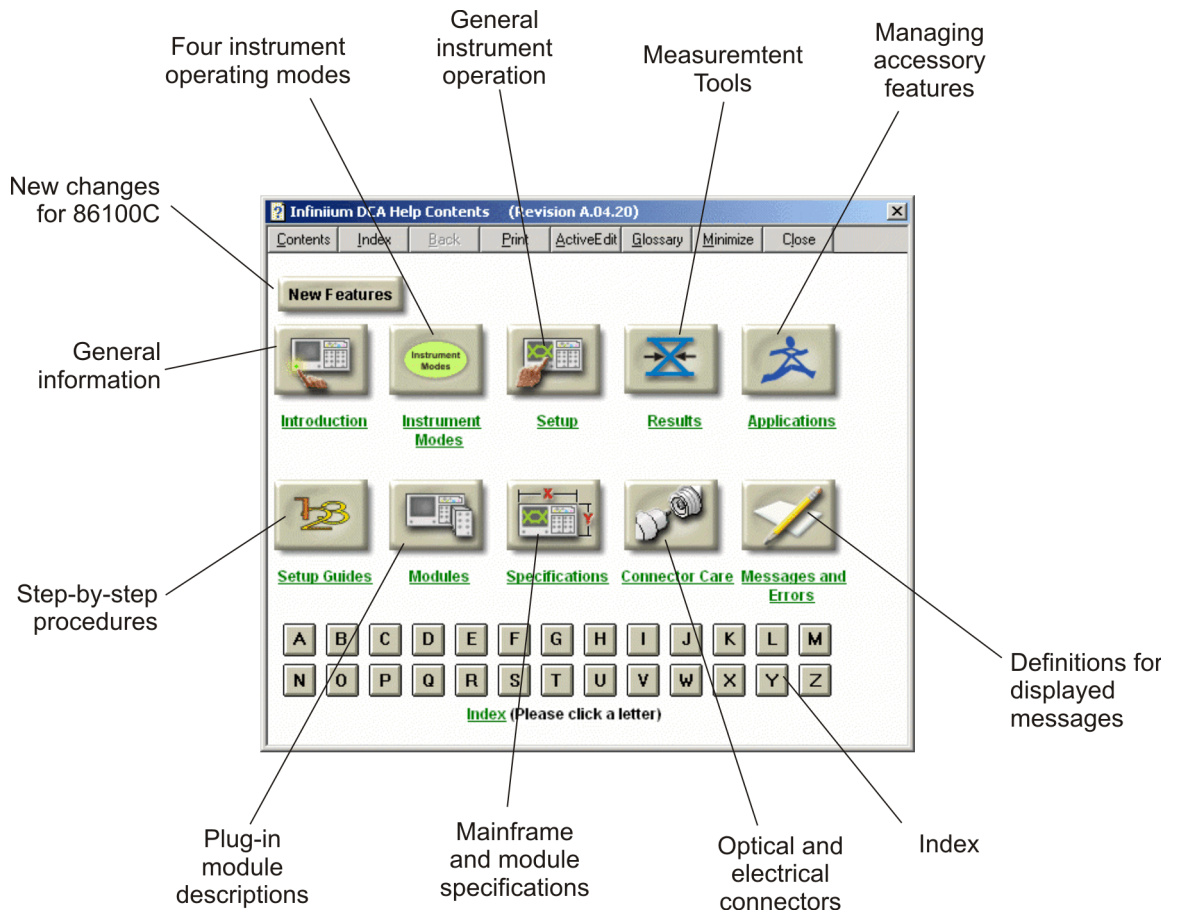


Figure 3-2. Help Contents

Getting Help While Changing Instrument Settings

Help is available directly from displayed dialog boxes.

- To see overview information in an open dialog box, touch the **Book** icon. A topic window opens and describes the dialog box and its controls.
- To get information on a specific item in the dialog box, touch the **What's this?** icon. Then touch the desired control on the dialog box. A window appears with a description of the selected control, as shown in the following figure.

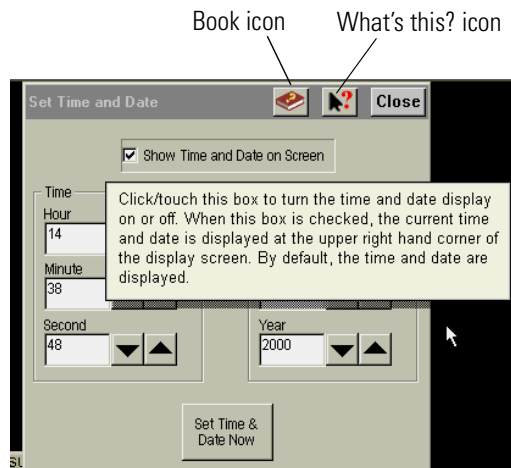


Figure 3-3. Help in dialog boxes

Learning About Measurement Results

After a measurement is performed, the displays shows the Measure tab which includes the measurement results. The fastest way to get help on measurement configuration or algorithms is to touch the **Setup & Info** button. The following figure shows the location of this button.

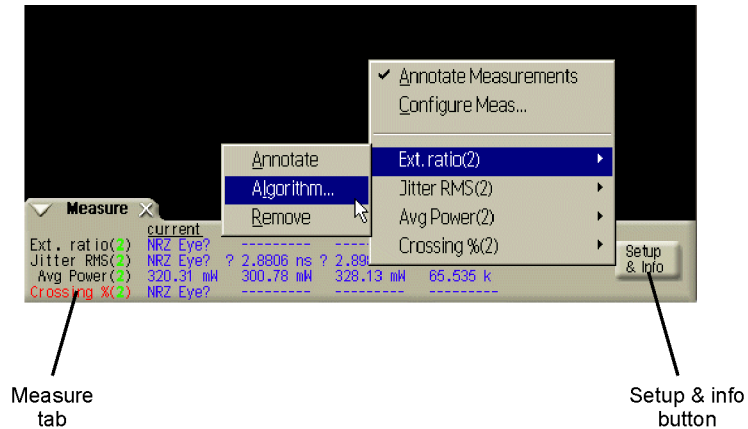


Figure 3-4. Help on measurement results

Printing Topics

- To print the contents of a Help topic, click the **Print** button, located at the top of the Help window.
- To print the contents of a pop-up window, place the pointer over the pop-up, click the right mouse button, and then click **Print Topic**.

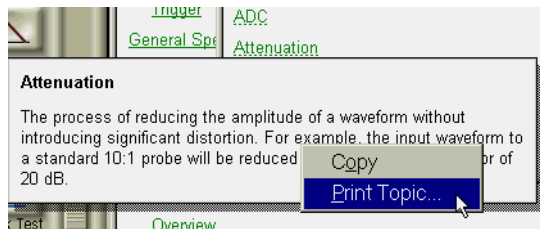


Figure 3-5. Printing a pop-up window

About Repetitive Strain Injury	4-3
Mice and Other Input Devices	4-4

Working in Comfort

Working in Comfort

To optimize your comfort and productivity, it is important that you set up your work area correctly and use your Agilent product properly. With that in mind, we have developed some setup and use recommendations for you to follow based on established ergonomic principles.

Improper and prolonged use of keyboards and input devices are among those tasks that have been associated with repetitive strain injury (RSI) to soft tissues in the hands and arms. If you experience discomfort or pain while using your Agilent Technologies product, discontinue use immediately and consult your physician as soon as possible.

Please study the recommendations offered here in this chapter. You may also wish to consult your employer's human resources department or other relevant departments for guidance specific to your company.

About Repetitive Strain Injury

Because your comfort and safety are our primary concern, we strongly recommend that you use the infinium DCA in accordance with established ergonomic principles and recommendations. Scientific literature suggests that there may be a relationship between injury to soft tissues - especially in the hands and arms - and prolonged improper use of keyboards or other equipment requiring repeated motions of the hands and forearms. This literature also suggests that there are many other risk factors that may increase the chance of such injury, commonly called Repetitive Strain Injury.

What is RSI?

Repetitive Strain Injury (RSI—also known as cumulative trauma disorder or repetitive motion injury) is a type of injury where soft tissues in the body, such as muscles, nerves, or tendons, become irritated or inflamed. RSI has been a reported problem for those who perform repetitive tasks such as assembly line work, meatpacking, sewing, playing musical instruments, and computer work. RSI has also been observed in those who frequently engage in activities such as carpentry, knitting, housework, gardening, tennis, windsurfing and lifting children.

What causes RSI?

The specific causes of RSI have not been established. Nevertheless, the incidence of RSI has been associated with a variety of risk factors, including:

- Too many uninterrupted repetitions of an activity or motion.
- Performing an activity in an awkward or unnatural posture.
- Maintaining a static position for prolonged periods.
- Failing to take frequent short breaks.
- Other environmental and social factors.

In addition, there have been reports associating the occurrence of RSI with the use of keyboards, mice, and other input devices. Also, certain medical conditions, such as rheumatoid arthritis, obesity and diabetes, may predispose people to this type of injury.

What if I experience discomfort?

If you are experiencing any discomfort, seek professional medical advice immediately. Typically, the earlier a problem is diagnosed and treated, the easier it is to resolve.

Mice and Other Input Devices

Various aspects of using mice and other input devices may increase your risk of discomfort or injury. Observing the following recommendations may reduce that risk.

- Try to keep your hand, wrist, and forearm in a neutral position while using your mouse or other input device.
- If you use your thumb to rotate the ball on a trackball or spaceball, keep it in a relaxed, natural shape, and maintain a neutral posture in your hand, wrist, and forearm.
- Hold the mouse gently by draping your fingers over it. Keep your hand relaxed and fingers loose. Do not grip the mouse tightly.
- It takes very little pressure or force from your fingers to activate the buttons or scroll wheel on your mouse, scrolling mouse, trackball, or other input device. Using too much force can place unnecessary stress on the tendons and muscles in your hands, wrists, and forearms.
- If you are using a scrolling mouse, be sure to keep your fingers and hand in a relaxed, neutral position when activating the scroll wheel. Also, this type of mouse features software that can minimize the number of mouse movements or button clicks.
- When using a mouse, trackball, or other input device, position it as close to the keyboard as possible, and keep it at the same level as you do not have to stretch while using it.
- Use a good quality mouse pad to enable the mouse to work most effectively and reduce unnecessary hand and wrist movements.
- Be sure to keep your mouse and trackball clean. Regular removal of accumulated dust and dirt helps ensure proper tracking and reduces unnecessary hand and wrist motions.

Numerics

- 12 GHz trigger bandwidth, 1–6
- 5475x series plug-in modules, 2–7
- 8348x series plug-in modules, 2–7
- 86100C-090, 1–19, 1–31
- 86100C-200, 2–17
- 86100C-201, 2–17

A

- accessories
 - connecting, 1–10
- adapters
 - APC 3.5 (f-f), 1–5
 - SMA (f-f), 1–5
- adapters, optic, 1–6
- Advanced Waveform Analysis, 2–17
- Agilent Technologies, contacting, 1–43
- Agilent Web site, 2–5
- airflow, 1–7
- algorithms, 3–5
- Altitude, 1–7
- amplitude offset, 2–6
- amplitude scale, 2–6
- audible beep, turning off, 1–24
- Autoscale button, 2–8

B

- Book icon, 3–4
- built-in information system, 3–2
 - temporarily hiding, 3–2

C

- calibration
 - certificate, 1–6
 - module, 1–26
 - touch screen, 1–23
- care of fiber optics, 1–25, 2–7
- CE mark, 1–3
- cleaning
 - fiber-optic connections, 1–38
 - instrument, 1–37
- clock recovery modules, 2–4
- clock signal, 2–8
- connecting
 - accessories, 1–10
 - printer, 1–12
- connector

- care, 1–38
- input, 1–38
- Contents topic, 1–38, 3–2
- CSA mark, 1–3

D

- dialog boxes, 3–4
- dimensions, 1–8
- display, external, 1–36
- Drive-C, recover, 2–24
- Drive-D, restore, 2–26

E

- electrical channel input circuits, 1–26
- electrostatic discharge, 1–26
- Enhanced Jitter Analysis, 2–17
- Environmental Specifications, 1–7
- eye diagram, viewing, 2–9
- Eye/Mask Mode, 2–2, 2–8

F

- Feature
 - adding, 2–16
 - Jitter Analysis, 2–17
- fiber optics
 - adapters, 1–6
 - care of, 1–25, 2–7
 - cleaning connections, 1–38
 - connectors, covering, 1–44
- fiber-optic adapters, changing, 1–6
- file sharing, 1–29
- front panel
 - features, 2–5
 - fiber-optic adapters, 1–6
 - mode buttons, 2–2
 - power switch, 1–25
 - USB port, 1–10

H

- Hard Disk Drive Recovery, 2–21, 2–24
- Help, 3–2
 - printing topics, 3–6
- Humidity, 1–7

I

- input connector, 1–38
- instrument
 - checking the shipment, 1–2
 - markings, 1–3
 - modes, 2–2
 - options, 1–6
 - positioning, 1–7
 - powering up, 1–25
 - returning for service, 1–43
- ISM1-A, 1–4

J

- Jitter Mode, 2–2
- jitter, measuring, 2–12

K

- keyboard, 1–5, 1–10

L

- LAN, 1–29
- licenses, 2–16
- line cord, 1–12, 1–14
- line power requirements, 1–13
- Linear Feedforward Equalizer, 2–17

M

- MATLAB Filter application, 2–17
- measurement
 - channels, 2–6
 - results, 3–5
 - toolbar, 2–3, 2–8, 2–13, 2–14
- Minimize button, 3–2
- modes
 - Eye/Mask, 2–8
 - instrument, 2–2
 - Jitter, 2–11
 - Oscilloscope, 2–13
 - TDR/TDT, 2–14
- module
 - calibration, 1–26
 - installing, 1–9
- modules, 2–6
- mouse, 1–5, 1–10

N

network
 printers, 1–29
 setup, 1–29

O

online help, 3–2
optic adapters, 1–6
option 090, 1–19
options, 1–6
Oscilloscope Mode, 2–2, 2–13

P

package contents, 1–2
packaging for shipment, 1–44
plug-in modules, 2–6
positioning the instrument, 1–7
power
 requirements, 1–13
 switch, 1–15, 1–25
 switch, system, 1–7
printer, 1–11
 connecting, 1–12

Q

Quick Measure button, 2–15

R

rack mounting, 1–7
rear panel
 LAN connection, 1–29
 line cord, 1–12
 parallel port, 1–11
 serial port, 1–11
 USB ports, 1–10
 VGA connection, 1–36
recover Drive-C, 2–24
removable hard disk option, 1–19, 1–31
Restore button, 3–2
restore, Drive-D, 2–26
returning to Agilent, 1–43

S

Safety Class 1 Product, 1–3
Safety Considerations, 1–2
service, 1–43
Setup & Info button, 3–5
Setup Wizard, Windows XP, 1–15
shipment
 checking package content, 1–2
shipping
 procedure, 1–44

software upgrade, 2–22
Specifications, 1–7
Start Menu, Windows XP, 2–19
synchronous clock signal, 2–8

T

TDR/TDT Mode, 2–2, 2–14
Temperature, 1–7
time-domain reflectometry, 2–2
timing reference signal, 2–4
touch screen, 2–3
 configuration, 1–23
trigger input signal, 2–4
Trigger Source button, 2–7

U

Upgrading instrument software, 2–21, 2–22
USB ports, 1–10
user's guide, 2–5
Utilities menu, 1–23

V

VGA connector, 1–36

W

warm-up time, 1–26
Web site, Agilent, 2–5
weight, 1–8
What's this? icon, 3–4
Windows XP, 2–18
 adding applications, 2–18
 changes to avoid, 2–20
 registry, 1–7
 second desktop, 1–36
 settings to avoid, 2–20
 setup wizard, 1–15
 Start Menu, 2–19